

TRUCK **SPARE PARTS**

Gesuchte Europäische Qualität

**SPARE PARTS**

sought-after  
**quality**

# CRANKSHAFT



**KLÖTZE**  
TECHNIC

[www.klotzetechnik.de](http://www.klotzetechnik.de)

**Klötze Technic** ist ein in Deutschland ansässiger Hersteller und Lieferant von LKW-, Anhänger- und Bus-Ersatzteilen.



**KLÖTZE**  
TECHNIC

Gesuchte Europäische  
**Qualität**

Klötze Technic is a Germany-based company specializing in truck, trailer, and bus spare parts. Together with our sales office in Turkey, we provide our customers with original spare parts of guaranteed quality. Our products are manufactured with superior German engineering.

Our main groups consist of Engine, Cooling System, Fuel System, Exhaust System, Clutch & Pedal, Gearbox, Propeller Shaft, Axles, Brake System, Hubs & Wheels, Suspension, Steering, Electrical System, Cabin, and Body.

At Klötze Technic, we strive to provide our customers with the highest quality products, competitive prices, and superior customer service.

#### **Our Mission:**

At Klötze Technic, we work to provide our customers with the highest quality and reliable spare parts for trucks, trailers, and buses.

Our high-quality products are manufactured with superior German engineering.

Our mission is to meet our customers' needs and provide them with the best customer service possible.

#### **Our Vision:**

At Klötze Technic, we aim to become a world-leading company in the field of truck, trailer, and bus spare parts.

Our vision is to provide our customers with the highest quality products, competitive prices, and superior customer service. In doing so, we aim to meet our customers' needs and ensure their satisfaction.

#### **Our Quality Policy:**

At Klötze Technic, quality and customer satisfaction are always our top priorities. Our products are manufactured with superior German engineering and are provided to our customers as original spare parts of guaranteed quality. Our quality policy is to provide our customers with the best quality products and meet their needs in the best way possible.

Customer satisfaction is always important to us.

**TRUCK SPARE PARTS**



**KLÖTZE**  
TECHNIC

Gesuchte Europäische  
**Qualität**



**TRUCK** SPARE PARTS

[www.klotzetechnik.de](http://www.klotzetechnik.de)



*PASSENGER CARS /  
COMMERCIAL  
VEHICLES*

# BMW

KRANK MİLİ / CRANKSHAFT



Klötze No REF.	ORJİNAL NO REFERENCE (OEM)	BALTA COUNTERWEIGHTS	SİLİNDİR CYL
<b>KTK 1300</b>	11218515071 / 11217803479	4	4

MOTOR TİPİ / DESCRIPTION

BMW N47 - B47 2.0 DIESEL ENGINE (977) GÜÇLENDİRİLMİŞ / NITRIDED (WITH GEAR)



Klötze No REF.	ORJİNAL NO REFERENCE (OEM)	BALTA COUNTERWEIGHTS	SİLİNDİR CYL
<b>KTK 1301</b>	11218571851	4	6

MOTOR TİPİ / DESCRIPTION

BMW N57 DIESEL ENGINE (971) GÜÇLENDİRİLMİŞ / NITRIDED



Klötze No REF.	ORJİNAL NO REFERENCE (OEM)	BALTA COUNTERWEIGHTS	SİLİNDİR CYL
<b>KTK 1302</b>	11217599501	8	6

MOTOR TİPİ / DESCRIPTION

BMW N54 BENZİN ENGINE - GÜÇLENDİRİLMİŞ / NITRIDED



Klötze No REF.	ORJİNAL NO REFERENCE (OEM)	BALTA COUNTERWEIGHTS	SİLİNDİR CYL
<b>KTK 1303</b>	11217640165 / 11217599247	4	4

MOTOR TİPİ / DESCRIPTION

BMW N20 - 2.0 BENZİN ENGINE - GÜÇLENDİRİLMİŞ / NITRIDED



Klötze No REF.	ORJİNAL NO REFERENCE (OEM)	BALTA COUNTERWEIGHTS	SİLİNDİR CYL
<b>KTK 1304</b>	11217631708	4	4

MOTOR TİPİ / DESCRIPTION

BMW N20 - 1.6 BENZİN ENGINE - GÜÇLENDİRİLMİŞ / NITRIDED



Oem numbers are only for comparison and must not be mentioned on invoices

[klotzetechnik.de](http://klotzetechnik.de)

# BMW

KRANK MİLİ / CRANKSHAFT



Klötze No REF.	ORJINAL NO REFERENCE (OEM)	BALTA COUNTERWEIGHTS	SİLİNDİR CYL
<b>KTK 1305</b>	11217812985	4	4

MOTOR TİPİ / DESCRIPTION

BMW N47D16A - 1.6 DIESEL ENGINE - GÜÇLENDİRİLMİŞ / NITRIDED



Klötze No REF.	ORJINAL NO REFERENCE (OEM)	BALTA COUNTERWEIGHTS	SİLİNDİR CYL
<b>KTK 1306</b>	11217561273	4	4

MOTOR TİPİ / DESCRIPTION

BMW N13 / N14 / N18 - 1.6 BENZİN ENGINE - GÜÇLENDİRİLMİŞ / NITRIDED



Klötze No REF.	ORJINAL NO REFERENCE (OEM)	BALTA COUNTERWEIGHTS	SİLİNDİR CYL
<b>KTK 1308</b>	11217580483	8	6

MOTOR TİPİ / DESCRIPTION

BMW N55 - BENZİN ENGINE - GÜÇLENDİRİLMİŞ / NITRIDED



Klötze No REF.	ORJINAL NO REFERENCE (OEM)	BALTA COUNTERWEIGHTS	SİLİNDİR CYL
<b>KTK 1309</b>	11217799970	8	6

MOTOR TİPİ / DESCRIPTION

BMW N57 - DIESEL ENGINE GÜÇLENDİRİLMİŞ / NITRIDED



Oem numbers are only for comparison and must not be mentioned on invoices

[klotzetechnik.de](http://klotzetechnik.de)

# LAND ROVER

KRANK MİLİ / CRANKSHAFT



Klötze No REF.	ORJİNAL NO REFERENCE (OEM)	BALTA COUNTERWEIGHTS	SİLİNDİR CYL
<b>KTK 1400</b>	LR010297 / LEF000001	4	V6
MOTOR TİPİ / DESCRIPTION			
RANGE ROVER SPORT DISCOVERY 3 - 2.7 TDV6 DIESEL ENGINE - 276DT - GÜÇLENDİRİLMİŞ / NITRIDED			



Klötze No REF.	ORJİNAL NO REFERENCE (OEM)	BALTA COUNTERWEIGHTS	SİLİNDİR CYL
<b>KTK 1401</b>	LR038168 - LEF000002	4	V6
MOTOR TİPİ / DESCRIPTION			
RANGE ROVER 3.0 SDV6 DIESEL ENGINE - 306 DT - GÜÇLENDİRİLMİŞ / NITRIDED			



Klötze No REF.	ORJİNAL NO REFERENCE (OEM)	BALTA COUNTERWEIGHTS	SİLİNDİR CYL
<b>KTK 1402</b>	LR090358	4	4
MOTOR TİPİ / DESCRIPTION			
RANGE ROVER 2.0 - 240 PS / 204DTA - TWIN TURBO - DIESEL - GÜÇLENDİRİLMİŞ / NITRIDED (WITH GEAR) CONROD DIA : 55 MM / MAIN ROD DIA : 59 MM			



Klötze No REF.	ORJİNAL NO REFERENCE (OEM)	BALTA COUNTERWEIGHTS	SİLİNDİR CYL
<b>KTK 1403</b>		6	V8
MOTOR TİPİ / DESCRIPTION			
RANGE ROVER 4.4 TDV8 DIESEL ENGINE - 448DT - GÜÇLENDİRİLMİŞ / NITRIDED			



Klötze No REF.	ORJİNAL NO REFERENCE (OEM)	BALTA COUNTERWEIGHTS	SİLİNDİR CYL
<b>KTK 1404</b>	22145128	6	V8
MOTOR TİPİ / DESCRIPTION			
RANGE ROVER 3.6 TDV8 DIESEL ENGINE - 368DT - GÜÇLENDİRİLMİŞ / NITRIDED			



Oem numbers are only for comparison and must not be mentioned on invoices

[klotzetechnik.de](http://klotzetechnik.de)

# LAND ROVER

KRANK MİLİ / CRANKSHAFT



Klötze No REF.	ORJİNAL NO REFERENCE (OEM)	BALTA COUNTERWEIGHTS	SİLİNDİR CYL
<b>KTK 1405</b>		4	4

#### MOTOR TİPİ / DESCRIPTION

RANGE ROVER 2.0 - 180 PS - 204DTD - DIESEL - GÜÇLENDİRİLMİŞ / NITRIDED (WITH GEAR)  
CONROD DIA : 50 MM / MAIN ROD DIA : 55 MM

# MERCEDES

KRANK MİLİ / CRANKSHAFT



Klötze No REF.	ORJİNAL NO REFERENCE (OEM)	BALTA COUNTERWEIGHTS	SİLİNDİR CYL
<b>KTK 0864</b>	122010072R	4	4

#### MOTOR TİPİ / DESCRIPTION

MERCEDES X CLASS / X 220D - X250 D / 2.3 DIESEL ENGINE - GÜÇLENDİRİLMİŞ / NITRIDED



Klötze No REF.	ORJİNAL NO REFERENCE (OEM)	BALTA COUNTERWEIGHTS	SİLİNDİR CYL
<b>KTK 0865</b>	122016377R M	8	4

#### MOTOR TİPİ / DESCRIPTION

MERCEDES C / VITO SERIES R9M 1.6 DIESEL ENGINE - GÜÇLENDİRİLMİŞ / NITRIDED



Klötze No REF.	ORJİNAL NO REFERENCE (OEM)	BALTA COUNTERWEIGHTS	SİLİNDİR CYL
<b>KTK 1200</b>	646 031 0401 / 611 031 0201 / 611 031 0001	4	4

#### MOTOR TİPİ / DESCRIPTION

MERCEDES BENZ OM 611 - 646 / DE22 SPRINTER 646 - DIESEL - GÜÇLENDİRİLMİŞ / NITRIDED



Oem numbers are only for comparison and must not be mentioned on invoices

[klotzetechnik.de](http://klotzetechnik.de)



# MERCEDES

KRANK MILİ / CRANKSHAFT



Klötze No REF.	ORJİNAL NO REFERENCE (OEM)	BALTA COUNTERWEIGHTS	SİLİNDİR CYL
KTK 1202	612 030 0203 / 612 031 0001	10	5

MOTOR TİPİ / DESCRIPTION

MERCEDES BENZ OM 612 - 647 2.7 CDI 20 VALVE - DIESEL - GÜÇLENDİRİLMİŞ / NITRIDED



Klötze No REF.	ORJİNAL NO REFERENCE (OEM)	BALTA COUNTERWEIGHTS	SİLİNDİR CYL
KTK 1203	651 030 0701	8	4

MOTOR TİPİ / DESCRIPTION

MERCEDES BENZ OM 651 EURO5 (Thrust Washer On 4th Main Journal) - DIESEL - GÜÇLENDİRİLMİŞ / NITRIDED - (WITH GEAR)



Klötze No REF.	ORJİNAL NO REFERENCE (OEM)	BALTA COUNTERWEIGHTS	SİLİNDİR CYL
KTK 1204	651 030 2501	4	4

MOTOR TİPİ / DESCRIPTION

MERCEDES BENZ OM 651 SPRINTER - VITO EURO5 - DIESEL - GÜÇLENDİRİLMİŞ / NITRIDED (WITH GEAR)



Klötze No REF.	ORJİNAL NO REFERENCE (OEM)	BALTA COUNTERWEIGHTS	SİLİNDİR CYL
KTK 1205	642 030 1601 / 642 030 0901	6	V6

MOTOR TİPİ / DESCRIPTION

MERCEDES BENZ OM 642 S320 CDI - DIESEL - GÜÇLENDİRİLMİŞ / NITRIDED



Klötze No REF.	ORJİNAL NO REFERENCE (OEM)	BALTA COUNTERWEIGHTS	SİLİNDİR CYL
KTK 1206	270 030 0001 / 270 030 0701	8	4

MOTOR TİPİ / DESCRIPTION

MERCEDES BENZ 1.6 - BENZİN - ENGINE W204 M274 & W176 M270 - GÜÇLENDİRİLMİŞ / NITRIDED



Oem numbers are only for comparison and must not be mentioned on invoices

[klotzetechnik.de](http://klotzetechnik.de)

# INFINITI

KRANK MİLİ / CRANKSHAFT



Klötze No REF.	ORJINAL NO REFERENCE (OEM)	BALTA COUNTERWEIGHTS	SİLİNDİR CYL
KTK 1460	8200945509B	6	V6
MOTOR TİPİ / DESCRIPTION			
FX 30 - DIESEL - GÜÇLENDİRİLMİŞ / NITRIDED			

# VOLKSWAGEN

KRANK MİLİ / CRANKSHAFT



Klötze No REF.	ORJINAL NO REFERENCE (OEM)	BALTA COUNTERWEIGHTS	SİLİNDİR CYL
KTK 0222	038105021E / 038105021Q	8	4
MOTOR TİPİ / DESCRIPTION			
VOLKSWAGEN VAG 1.9 TDI VAG BLS, BJB, BES, BST, BKC - DIESEL - GÜÇLENDİRİLMİŞ / NITRIDED			



Klötze No REF.	ORJINAL NO REFERENCE (OEM)	BALTA COUNTERWEIGHTS	SİLİNDİR CYL
KTK 0223	03G105021L	8	4
MOTOR TİPİ / DESCRIPTION			
VOLKSWAGEN VAG 1.9 TDI VAG ARL, AWX, BSS, BWV, BPW, ASZ- DIESEL- GÜÇLENDİRİLMİŞ / NITRIDED			



Klötze No REF.	ORJINAL NO REFERENCE (OEM)	BALTA COUNTERWEIGHTS	SİLİNDİR CYL
KTK 0224	03L105021C	4	4
MOTOR TİPİ / DESCRIPTION			
VOLKSWAGEN VAG 2.0 TDI VAG AZV, BKD, BMM, BMN, CBDA-C, CEGA, CJAA - DIESEL - GÜÇLENDİRİLMİŞ / NITRIDED			



Oem numbers are only for comparison and must not be mentioned on invoices

[klotzetechnik.de](http://klotzetechnik.de)

# VOLKSWAGEN

KRANK MİLİ / CRANKSHAFT



Klötze No REF.	ORJINAL NO REFERENCE (OEM)	BALTA COUNTERWEIGHTS	SİLİNDİR CYL
KTK 0225	03L105021A	4	4

MOTOR TİPİ / DESCRIPTION

VOLKSWAGEN VAG 1.6 TDI VAG CAYB, CAYC, CAYD, CAYE - DIESEL - GÜÇLENDİRİLMİŞ / NITRIDED



Klötze No REF.	ORJINAL NO REFERENCE (OEM)	BALTA COUNTERWEIGHTS	SİLİNDİR CYL
KTK 0226	03P105021A	4	3

MOTOR TİPİ / DESCRIPTION

VOLKSWAGEN VAG 1.2 CC - CFW (03P) - DIESEL ENGINE - GÜÇLENDİRİLMİŞ / NITRIDED

# DODGE

KRANK MİLİ / CRANKSHAFT



Klötze No REF.	ORJINAL NO REFERENCE (OEM)	BALTA COUNTERWEIGHTS	SİLİNDİR CYL
KTK 1450	68253758AA / 68027448AA / 68158311AA / 68211059AA	8	4

MOTOR TİPİ / DESCRIPTION

DODGE NITRO (KA) 2007-2011 2.8CRD - CHRYSLER GRAND VOYAGER (RT) 2008-2015, 2.8 CRD - JEEP CHEROKEE (KK) 2008-2012 2.8CRD - JEEP WRANGLER (JK) 2007-2017 2.8CRD ENS - DIESEL ENGINE - GÜÇLENDİRİLMİŞ / NITRIDED



Oem numbers are only for comparison and must not be mentioned on invoices

[klotzetechnik.de](http://klotzetechnik.de)

# SSANGYONG

KRANK MİLİ / CRANKSHAFT



KLÖTZE NO REF.	ORJİNAL NO REFERENCE (OEM)	BALTA COUNTERWEIGHTS	SİLİNDİR CYL
<b>KTK 0790</b>	6640310101	8	4
MOTOR TİPİ / DESCRIPTION			
SSANGYONG ACTYON / ACTYON SPORTS / KYRON / REXTON 2.0 DIESEL ENGINE - D20T - GÜÇLENDİRİLMİŞ / NITRIDED			



Klötze No REF.	ORJİNAL NO REFERENCE (OEM)	BALTA COUNTERWEIGHTS	SİLİNDİR CYL
<b>KTK 0791</b>	6710310101	8	4
MOTOR TİPİ / DESCRIPTION			
SSANGYONG KORANDO / KORANDO SPORTS D20DTF - D20DTR 2.0 DIESEL ENGINE - GÜÇLENDİRİLMİŞ / NITRIDED			

# RENAULT

KRANK MİLİ / CRANKSHAFT



Klötze No REF.	ORJİNAL NO REFERENCE (OEM)	BALTA COUNTERWEIGHTS	SİLİNDİR CYL
<b>KTK 0850</b>	7700564485	4	4
MOTOR TİPİ / DESCRIPTION			
RENAULT BROADWAY - TOROS 1400 CC R12 R9 - BENZİN			



Klötze No REF.	ORJİNAL NO REFERENCE (OEM)	BALTA COUNTERWEIGHTS	SİLİNDİR CYL
<b>KTK 0851</b>	7700273951	4	4
MOTOR TİPİ / DESCRIPTION			
RENAULT EXPRESS-KANGOO-CLIO- ENERGY DACIA LOGAN E7J BENZİN ENGINE 1400 CC			



Oem numbers are only for comparison and must not be mentioned on invoices

[klotzetechnik.de](http://klotzetechnik.de)

# RENAULT

KRANK MİLİ / CRANKSHAFT



Klötze No REF.	ORJİNAL NO REFERENCE (OEM)	BALTA COUNTERWEIGHTS	SİLİNDİR CYL
<b>KTK 0854</b>	8200382457	4	4

MOTOR TİPİ / DESCRIPTION

RENAULT FLUENCE-CLIO-KANGOO-MEGANE K9K DIESEL ENGINE 1.5 DCI 14 METRİK GÜÇLENDİRİLMİŞ / NITRIDED



Klötze No REF.	ORJİNAL NO REFERENCE (OEM)	BALTA COUNTERWEIGHTS	SİLİNDİR CYL
<b>KTK 0856</b>	8200037836	4	4

MOTOR TİPİ / DESCRIPTION

RENAULT MEGANE-LAGUNA-TRAFIC F9Q DIESEL ENGINE 1.9 DCI - GÜÇLENDİRİLMİŞ / NITRIDED



Klötze No REF.	ORJİNAL NO REFERENCE (OEM)	BALTA COUNTERWEIGHTS	SİLİNDİR CYL
<b>KTK 0857</b>	8200314795	8	4

MOTOR TİPİ / DESCRIPTION

RENAULT MASTER 2,5 DCI G9U DIESEL ENGINE - GÜÇLENDİRİLMİŞ / NITRIDED



Klötze No REF.	ORJİNAL NO REFERENCE (OEM)	BALTA COUNTERWEIGHTS	SİLİNDİR CYL
<b>KTK 0858</b>	7700111883	8	4

MOTOR TİPİ / DESCRIPTION

RENAULT KANGOO - MEGANE F8Q DIESEL ENGINE 1.9 DCI - GÜÇLENDİRİLMİŞ / NITRIDED



Klötze No REF.	ORJİNAL NO REFERENCE (OEM)	BALTA COUNTERWEIGHTS	SİLİNDİR CYL
<b>KTK 0861</b>	7702252575	8	4

MOTOR TİPİ / DESCRIPTION

RENAULT 9 FAIRWAY C2L 1600 cc OIL BENZİN GÜÇLENDİRİLMİŞ / NITRIDED



Oem numbers are only for comparison and must not be mentioned on invoices

[klotzetechnik.de](http://klotzetechnik.de)

# RENAULT

KRANK MİLİ / CRANKSHAFT



Klötze No REF.	ORJINAL NO REFERENCE (OEM)	BALTA COUNTERWEIGHTS	SİLİNDİR CYL
KTK 0863	8200385222	8	4
MOTOR TİPİ / DESCRIPTION			
RENAULT M9R DIESEL ENGINE 2.0 DCI (MEGANE - KOLEOS - LATITUDE - TRAFFIC - LAGUNA) - GÜÇLENDİRİLMİŞ / NITRIDED (WITH GEAR)			



Klötze No REF.	ORJINAL NO REFERENCE (OEM)	BALTA COUNTERWEIGHTS	SİLİNDİR CYL
KTK 0864	8200805743 / 122010072R	4	4
MOTOR TİPİ / DESCRIPTION			
RENAULT MASTER - TRAFFIC 3 - M9T DIESEL ENGINE - 2.3 DCI - GÜÇLENDİRİLMİŞ / NITRIDED			



Klötze No REF.	ORJINAL NO REFERENCE (OEM)	BALTA COUNTERWEIGHTS	SİLİNDİR CYL
KTK 0865	122016377R M	8	4
MOTOR TİPİ / DESCRIPTION			
RENAULT MEGANE - FLUENCE - CAPTUR - ESPACE - TALISMAN - SCENIC / R9M 1.6 DIESEL ENGINE - GÜÇLENDİRİLMİŞ / NITRIDED			

# CHRYSLER

KRANK MİLİ / CRANKSHAFT



Klötze No REF.	ORJINAL NO REFERENCE (OEM)	BALTA COUNTERWEIGHTS	SİLİNDİR CYL
KTK 1205	642 030 1601 / 642 030 0901	6	V6
MOTOR TİPİ / DESCRIPTION			
CHRYSLER CRD 3.0 - DIESEL - GÜÇLENDİRİLMİŞ / NITRIDED			



Oem numbers are only for comparison and must not be mentioned on invoices

[klotzetechnik.de](http://klotzetechnik.de)

# FIAT

KRANK MİLİ / CRANKSHAFT



Klötze No REF.	ORJİNAL NO REFERENCE (OEM)	BALTA COUNTERWEIGHTS	SİLİNDİR CYL
KTK 0250	7670815	4	4

MOTOR TİPİ / DESCRIPTION

FIAT TOFAŞ 131 1600 cc (Volant :74 mm - Hosing Dia :32 mm) - BENZİN



Klötze No REF.	ORJİNAL NO REFERENCE (OEM)	BALTA COUNTERWEIGHTS	SİLİNDİR CYL
KTK 0251	5888226	4	4

MOTOR TİPİ / DESCRIPTION

FIAT TEMPRA SLX 1.6 / UNO 70 - BENZİN



Klötze No REF.	ORJİNAL NO REFERENCE (OEM)	BALTA COUNTERWEIGHTS	SİLİNDİR CYL
KTK 0252	55200307	8	4

MOTOR TİPİ / DESCRIPTION

FIAT ALBEA-DOBLO-FIORINO-IDEA-LINEA-PALIO-PUNTO-500L-EGEA 1.3 MULTIJET DIESEL ENGINES - GÜÇLENDİRİLMİŞ / NITRIDED



Klötze No REF.	ORJİNAL NO REFERENCE (OEM)	BALTA COUNTERWEIGHTS	SİLİNDİR CYL
KTK 0253	71736268	8	4

MOTOR TİPİ / DESCRIPTION

FIAT DOBLO - SCUDO 1.9 DIESEL - GÜÇLENDİRİLMİŞ / NITRIDED



Klötze No REF.	ORJİNAL NO REFERENCE (OEM)	BALTA COUNTERWEIGHTS	SİLİNDİR CYL
KTK 0254	71736266	8	4

MOTOR TİPİ / DESCRIPTION

FIAT DOBLO - SCUDO 1.9 JTD DIESEL - GÜÇLENDİRİLMİŞ / NITRIDED



Oem numbers are only for comparison and must not be mentioned on invoices

[klotzetechnik.de](http://klotzetechnik.de)

# FIAT

KRANK MILİ / CRANKSHAFT



Klötze No REF.	ORJİNAL NO REFERENCE (OEM)	BALTA COUNTERWEIGHTS	SİLİNDİR CYL
<b>KTK 0255</b>	5893589	8	4
MOTOR TİPİ / DESCRIPTION			
FIAT PALIO-DOBLO-ALBEA 1.2 ENGINE 8 VALVE - BENZİN			



Klötze No REF.	ORJİNAL NO REFERENCE (OEM)	BALTA COUNTERWEIGHTS	SİLİNDİR CYL
<b>KTK 0256</b>	71718466	8	4
MOTOR TİPİ / DESCRIPTION			
FIAT PALIO-DOBLO-ALBEA 1.2 BENZİN ENGINE 16 VALVE			



Klötze No REF.	ORJİNAL NO REFERENCE (OEM)	BALTA COUNTERWEIGHTS	SİLİNDİR CYL
<b>KTK 0259</b>	71732627	8	4
MOTOR TİPİ / DESCRIPTION			
FIAT ALBEA / PUNTO 1.4 FIRE 8V/16V (192B2.000, 843A1.000) - BENZİN GÜÇLENDİRİLMİŞ / NITRIDED			



Klötze No REF.	ORJİNAL NO REFERENCE (OEM)	BALTA COUNTERWEIGHTS	SİLİNDİR CYL
<b>KTK 0260</b>	71718098	4	4
MOTOR TİPİ / DESCRIPTION			
FIAT MAREA LIBERTY 1.6 BENZİN ENGINE - GÜÇLENDİRİLMİŞ / NITRIDED			



Klötze No REF.	ORJİNAL NO REFERENCE (OEM)	BALTA COUNTERWEIGHTS	SİLİNDİR CYL
<b>KTK 0261</b>	71753030	4	4
MOTOR TİPİ / DESCRIPTION			
FIAT EGEEA - LINEA - DOBLO - PUNTO - FIAT 500 1.6 MULTIJET - DIESEL GÜÇLENDİRİLMİŞ / NITRIDED			



Oem numbers are only for comparison and must not be mentioned on invoices

[klotzetechnik.de](http://klotzetechnik.de)



# FIAT

KRANK MİLİ / CRANKSHAFT



Klötze No REF.	ORJINAL NO REFERENCE (OEM)	BALTA COUNTERWEIGHTS	SİLİNDİR CYL
KTK 0262	504049281	4	4

MOTOR TİPİ / DESCRIPTION

FIAT DUCATO 2.3 MULTIJET F1AE / IVECO DAILY / KARSAN JEST MİNİBÜS / KARSAN J10 MİNİBÜS  
EURO 4 - DIESEL GÜÇLENDİRİLMİŞ / NITRIDED



Klötze No REF.	ORJINAL NO REFERENCE (OEM)	BALTA COUNTERWEIGHTS	SİLİNDİR CYL
KTK 0263	5801846065	4	4

MOTOR TİPİ / DESCRIPTION

FIAT DUCATO 2.3 MULTIJET EURO 5-6 - DIESEL GÜÇLENDİRİLMİŞ / NITRIDED



Klötze No REF.	ORJINAL NO REFERENCE (OEM)	BALTA COUNTERWEIGHTS	SİLİNDİR CYL
KTK 0264	504033129	4	4

MOTOR TİPİ / DESCRIPTION

FIAT DUCATO, SOFIM 2.8 DAILY 8140.23/43/63 (STROKE:100 MM-FLANGE:114 MM) DIESEL



Oem numbers are only for comparison and must not be mentioned on invoices

[klotzetechnik.de](http://klotzetechnik.de)

# OPEL

KRANK MİLİ / CRANKSHAFT



Klötze No REF.	ORJİNAL NO REFERENCE (OEM)	BALTA COUNTERWEIGHTS	SİLİNDİR CYL
<b>KTK 0252</b>	55200307	8	4
MOTOR TİPİ / DESCRIPTION			
OPEL CORSA-ASTRA-COMBO 1.3 CDTI - Z13DT DIESEL ENGINE GÜÇLENDİRİLMİŞ / NITRIDED			



Klötze No REF.	ORJİNAL NO REFERENCE (OEM)	BALTA COUNTERWEIGHTS	SİLİNDİR CYL
<b>KTK 0254</b>	71736266	8	4
MOTOR TİPİ / DESCRIPTION			
OPEL INSIGNIA A20DTH ENGINE DIESEL GÜÇLENDİRİLMİŞ / NITRIDED			



Klötze No REF.	ORJİNAL NO REFERENCE (OEM)	BALTA COUNTERWEIGHTS	SİLİNDİR CYL
<b>KTK 0261</b>	71753030	4	4
MOTOR TİPİ / DESCRIPTION			
OPEL CORSA-ASTRA-COMBO 1.6 CDTI - DIESEL GÜÇLENDİRİLMİŞ / NITRIDED			



Klötze No REF.	ORJİNAL NO REFERENCE (OEM)	BALTA COUNTERWEIGHTS	SİLİNDİR CYL
<b>KTK 0856</b>	8200037836	4	4
MOTOR TİPİ / DESCRIPTION			
OPEL VIVARO F9Q DIESEL ENGINE 1.9 CDI - GÜÇLENDİRİLMİŞ / NITRIDED			



Klötze No REF.	ORJİNAL NO REFERENCE (OEM)	BALTA COUNTERWEIGHTS	SİLİNDİR CYL
<b>KTK 0857</b>	8200314795	8	4
MOTOR TİPİ / DESCRIPTION			
OPEL MOVANO G9U DIESEL ENGINE 2.5 DCI - GÜÇLENDİRİLMİŞ / NITRIDED			



Oem numbers are only for comparison and must not be mentioned on invoices

[klotzetechnik.de](http://klotzetechnik.de)

# OPEL

KRANK MİLİ / CRANKSHAFT



Klötze No REF.	ORJİNAL NO REFERENCE (OEM)	BALTA COUNTERWEIGHTS	SİLİNDİR CYL
KTK 0960	96440169	8	4

MOTOR TİPİ / DESCRIPTION

OPEL ANTARA 2.0 DIESEL ENGINE / CHEVROLET CAPTIVA - EPICA - Z20S1 - GÜÇLENDİRİLMİŞ / NITRIDED



Klötze No REF.	ORJİNAL NO REFERENCE (OEM)	BALTA COUNTERWEIGHTS	SİLİNDİR CYL
KTK 0264	7701205409	4	4

MOTOR TİPİ / DESCRIPTION

OPEL MOVANO 2.8 DCI - S8U DIESEL ENGINE

# CITROEN

KRANK MİLİ / CRANKSHAFT



Klötze No REF.	ORJİNAL NO REFERENCE (OEM)	BALTA COUNTERWEIGHTS	SİLİNDİR CYL
KTK 0754	0501.J9	8	4

MOTOR TİPİ / DESCRIPTION

CITROEN 14 HDI DV4 C2 / C3 DIESEL GÜÇLENDİRİLMİŞ / NITRIDED



Klötze No REF.	ORJİNAL NO REFERENCE (OEM)	BALTA COUNTERWEIGHTS	SİLİNDİR CYL
KTK 0755	0501.K6	8	4

MOTOR TİPİ / DESCRIPTION

CITROEN 1.6 HDI ( DV6 - 9HX ) C3 / C4 / C5 / PICASSO / BERLINGO 1.6 HDI - DIESEL - GÜÇLENDİRİLMİŞ / NITRIDED



Oem numbers are only for comparison and must not be mentioned on invoices

[klotzetechnik.de](http://klotzetechnik.de)

# CITROEN

KRANK MİLİ / CRANKSHAFT



Klötze No REF.	ORJİNAL NO REFERENCE (OEM)	BALTA COUNTERWEIGHTS	SİLİNDİR CYL
KTK 0264	0501.H6	4	4

MOTOR TİPİ / DESCRIPTION

PEUGEOT BOXER 2.8 TD - DIESEL

# FORD

KRANK MİLİ / CRANKSHAFT



Klötze No REF.	ORJİNAL NO REFERENCE (OEM)	BALTA COUNTERWEIGHTS	SİLİNDİR CYL
KTK 0300	VC1Q 6303CB	8	4

MOTOR TİPİ / DESCRIPTION

FORD TRANSIT 2.4 TDCI ( V184 - D2FA ) - DIESEL GÜÇLENDİRİLMİŞ / NITRIDED



Klötze No REF.	ORJİNAL NO REFERENCE (OEM)	BALTA COUNTERWEIGHTS	SİLİNDİR CYL
KTK 0301	XM34 6300BB	8	4

MOTOR TİPİ / DESCRIPTION

FORD RANGER 2.5 - DIESEL



Klötze No REF.	ORJİNAL NO REFERENCE (OEM)	BALTA COUNTERWEIGHTS	SİLİNDİR CYL
KTK 0302	894F-6303AA	4	4

MOTOR TİPİ / DESCRIPTION

FORD TRANSIT T12 / T15 - DIESEL GÜÇLENDİRİLMİŞ / NITRIDED



Oem numbers are only for comparison and must not be mentioned on invoices

[klotzetechnik.de](http://klotzetechnik.de)

# FORD

KRANK MİLİ / CRANKSHAFT



Klötze No REF.	ORJİNAL NO REFERENCE (OEM)	BALTA COUNTERWEIGHTS	SİLİNDİR CYL
KTK 0304	4M5Q-6303AA	8	4

MOTOR TİPİ / DESCRIPTION

FORD CONNECT 1.8 TDI BHPA - DIESEL GÜÇLENDİRİLMİŞ / NITRIDED



Klötze No REF.	ORJİNAL NO REFERENCE (OEM)	BALTA COUNTERWEIGHTS	SİLİNDİR CYL
KTK 0305	GK2Q6303CB	4	4

MOTOR TİPİ / DESCRIPTION

FORD TRANSIT 2.0 TDCI PANTHER - DIESEL GÜÇLENDİRİLMİŞ / NITRIDED



Klötze No REF.	ORJİNAL NO REFERENCE (OEM)	BALTA COUNTERWEIGHTS	SİLİNDİR CYL
KTK 0306	BK3Q6303EA	8	5

MOTOR TİPİ / DESCRIPTION

FORD TRANSIT V347 3.2L 200 PS / FORD RANGER 3.2L DURATORQ PUMA - DIESEL



Klötze No REF.	ORJİNAL NO REFERENCE (OEM)	BALTA COUNTERWEIGHTS	SİLİNDİR CYL
KTK 0307	BM5G6303BA / 98MM6303CC	4	4

MOTOR TİPİ / DESCRIPTION

FORD FOCUS - FIESTA - S-MAX C-MAX KUGA JQDB JQDA JQMA JQMB JTDA JTDB JTJA (4 KEY WAY) - BENZİN GÜÇLENDİRİLMİŞ / NITRIDED



Klötze No REF.	ORJİNAL NO REFERENCE (OEM)	BALTA COUNTERWEIGHTS	SİLİNDİR CYL
KTK 0308	BM5G6303BA / 98MM6303CC	4	4

MOTOR TİPİ / DESCRIPTION

FORD FOCUS - FIESTA - S-MAX C-MAX KUGA JQDB JQDA JQMA JQMB JTDA JTDB JTJA (2 KEY WAY) - BENZİN GÜÇLENDİRİLMİŞ / NITRIDED



Oem numbers are only for comparison and must not be mentioned on invoices

[klotzetechnik.de](http://klotzetechnik.de)

# FORD

KRANK MİLİ / CRANKSHAFT



Klötze No REF.	ORJİNAL NO REFERENCE (OEM)	BALTA COUNTERWEIGHTS	SİLİNDİR CYL
KTK 0309	DS7G6303AC	4	4

MOTOR TİPİ / DESCRIPTION

FORD FOCUS - KUGA - MONDEO 1.5 ECOBOOST - BENZİN GÜÇLENDİRİLMİŞ / NITRIDED



Klötze No REF.	ORJİNAL NO REFERENCE (OEM)	BALTA COUNTERWEIGHTS	SİLİNDİR CYL
KTK 0754	2S6Q6303AA	8	4

MOTOR TİPİ / DESCRIPTION

FORD 1.4 HDI ( DV4 ) FIESTA 1.4 - DIESEL GÜÇLENDİRİLMİŞ / NITRIDED



Klötze No REF.	ORJİNAL NO REFERENCE (OEM)	BALTA COUNTERWEIGHTS	SİLİNDİR CYL
KTK 0755	7M5Q 6303AB	8	4

MOTOR TİPİ / DESCRIPTION

FORD 1.6 HDI ( DV6 - 9HX ) FOCUS / C-MAX / FUSION - DIESEL - GÜÇLENDİRİLMİŞ / NITRIDED



Oem numbers are only for comparison and must not be mentioned on invoices

[klotzetechnik.de](http://klotzetechnik.de)

# KIA

KRANK MILİ / CRANKSHAFT



Klötze No REF.	ORJİNAL NO REFERENCE (OEM)	BALTA COUNTERWEIGHTS	SİLİNDİR CYL
<b>KTK 0550</b>	OR24111301	4	4
MOTOR TİPİ / DESCRIPTION			
KIA BESTA MINIBUS 2200 CC - DIESEL			



Klötze No REF.	ORJİNAL NO REFERENCE (OEM)	BALTA COUNTERWEIGHTS	SİLİNDİR CYL
<b>KTK 0552</b>	OK65A11301	8	4
MOTOR TİPİ / DESCRIPTION			
KIA BONGO - PREGIO K2700, J2 DIESEL ENGINE			



Klötze No REF.	ORJİNAL NO REFERENCE (OEM)	BALTA COUNTERWEIGHTS	SİLİNDİR CYL
<b>KTK 0553</b>	OK41011301A	4	4
MOTOR TİPİ / DESCRIPTION			
KIA COBRA 3500, K3500 DIESEL			



Klötze No REF.	ORJİNAL NO REFERENCE (OEM)	BALTA COUNTERWEIGHTS	SİLİNDİR CYL
<b>KTK 0554</b>	OK47A11301A	4	4
MOTOR TİPİ / DESCRIPTION			
KIA COBRA K3600 DIESEL			



Klötze No REF.	ORJİNAL NO REFERENCE (OEM)	BALTA COUNTERWEIGHTS	SİLİNDİR CYL
<b>KTK 0882</b>	23110 - 2F110 / 651F6 - 2FU00	8	4
MOTOR TİPİ / DESCRIPTION			
KIA SPORTAGE - SORENTO 2.2 CRDI - D4HB DIESEL ENGINE - GÜÇLENDİRİLMİŞ / NITRIDED			



Oem numbers are only for comparison and must not be mentioned on invoices

[klotzetechnik.de](http://klotzetechnik.de)

# KIA

KRANK MİLİ / CRANKSHAFT



Klötze No REF.	ORJİNAL NO REFERENCE (OEM)	BALTA COUNTERWEIGHTS	SİLİNDİR CYL
<b>KTK 0883</b>	23110-27420	8	4

MOTOR TİPİ / DESCRIPTION

KIA SPORTAGE 2.0 CRDI D4EA - 4DEB DIESEL ENGINE - GÜÇLENDİRİLMİŞ / NITRIDED



Klötze No REF.	ORJİNAL NO REFERENCE (OEM)	BALTA COUNTERWEIGHTS	SİLİNDİR CYL
<b>KTK 0915</b>	23110-27500	4	3

MOTOR TİPİ / DESCRIPTION

KIA CERATO 1.5 CRDI D3EA DIESEL ENGINE



Klötze No REF.	ORJİNAL NO REFERENCE (OEM)	BALTA COUNTERWEIGHTS	SİLİNDİR CYL
<b>KTK 0916</b>	23111-42011 / 23111-42012	4	4

MOTOR TİPİ / DESCRIPTION

KIA BONGO TCI 2500 TURBO D4BH DIESEL ENGINE - GÜÇLENDİRİLMİŞ / NITRIDED



Klötze No REF.	ORJİNAL NO REFERENCE (OEM)	BALTA COUNTERWEIGHTS	SİLİNDİR CYL
<b>KTK 0917</b>	23110-4A000 / 23110-4A010	8	4

MOTOR TİPİ / DESCRIPTION

KIA SORENTO 140-170 HP 2.5 CRDI D4CB DIESEL ENGINE - GÜÇLENDİRİLMİŞ / NITRIDED



Klötze No REF.	ORJİNAL NO REFERENCE (OEM)	BALTA COUNTERWEIGHTS	SİLİNDİR CYL
<b>KTK 0919</b>	23110-2A601	8	4

MOTOR TİPİ / DESCRIPTION

KIA CERATO / RIO 1,5 CRDI D4FA/D4FB DIESEL ENGINE - GÜÇLENDİRİLMİŞ / NITRIDED



Oem numbers are only for comparison and must not be mentioned on invoices

[klotzetechnik.de](http://klotzetechnik.de)



# KIA

KRANK MİLİ / CRANKSHAFT



Klötze No REF.	ORJİNAL NO REFERENCE (OEM)	BALTA COUNTERWEIGHTS	SİLİNDİR CYL
<b>KTK 0920</b>	23111-2A701	4	4

MOTOR TİPİ / DESCRIPTION

KIA CERATO / RIO 1.5 - 1.6 CRDI U16 D4FB DIESEL ENGINE STROK: 42,25- GÜÇLENDİRİLMİŞ / NITRIDED



Klötze No REF.	ORJİNAL NO REFERENCE (OEM)	BALTA COUNTERWEIGHTS	SİLİNDİR CYL
<b>KTK 0921</b>	23110 - 2A502 / 23110 - 2A510	4	4

MOTOR TİPİ / DESCRIPTION

KIA CERATO - RIO 1.4 CRDI U14 D4FC DIESEL ENGINE STROK: 39,50 GÜÇLENDİRİLMİŞ / NITRIDED



Klötze No REF.	ORJİNAL NO REFERENCE (OEM)	BALTA COUNTERWEIGHTS	SİLİNDİR CYL
<b>KTK 0922</b>	23111-26400	8	4

MOTOR TİPİ / DESCRIPTION

KIA RIO - CERATO 1.4 CC (2006 - 2011) - G4EE BENZIN ENGINE



Klötze No REF.	ORJİNAL NO REFERENCE (OEM)	BALTA COUNTERWEIGHTS	SİLİNDİR CYL
<b>KTK 0923</b>	23111-26100	8	4

MOTOR TİPİ / DESCRIPTION

KIA RIO - CERATO 1.6 CC (2003 - 2011) - G4ED BENZIN ENGINE GÜÇLENDİRİLMİŞ / NITRIDED



Klötze No REF.	ORJİNAL NO REFERENCE (OEM)	BALTA COUNTERWEIGHTS	SİLİNDİR CYL
<b>KTK 0924</b>	23110-2B100	4	4

MOTOR TİPİ / DESCRIPTION

KIA CEED - RIO 1.4 G4FA BENZIN ENGINE / 2011 SONRASI - GÜÇLENDİRİLMİŞ / NITRIDED



Oem numbers are only for comparison and must not be mentioned on invoices

[klotzetechnik.de](http://klotzetechnik.de)

# KIA

KRANK MİLİ / CRANKSHAFT



Klötze No REF.	ORJINAL NO REFERENCE (OEM)	BALTA COUNTERWEIGHTS	SİLİNDİR CYL
<b>KTK 0925</b>	23110-03221	8	4

MOTOR TİPİ / DESCRIPTION

KIA PICANTO - RIO İ20 1.2 CC / G4LA BENZİN ENGINE - GÜÇLENDİRİLMİŞ / NITRIDED (WITH GEAR)



Klötze No REF.	ORJINAL NO REFERENCE (OEM)	BALTA COUNTERWEIGHTS	SİLİNDİR CYL
<b>KTK 0926</b>	23110 - 2F310 6F0362FH00	4	4

MOTOR TİPİ / DESCRIPTION

KIA SPORTAGE (11 - 16) 2.0 D4HA DIEZEL ENGINE - GÜÇLENDİRİLMİŞ / NITRIDED (WITH GEAR)

# MAZDA

KRANK MİLİ / CRANKSHAFT



Klötze No REF.	ORJINAL NO REFERENCE (OEM)	BALTA COUNTERWEIGHTS	SİLİNDİR CYL
<b>KTK 0550</b>	R2Y11300A	4	4

MOTOR TİPİ / DESCRIPTION

MAZDA E2200 PICKUP-MINIBUS R2 - DIESEL



Klötze No REF.	ORJINAL NO REFERENCE (OEM)	BALTA COUNTERWEIGHTS	SİLİNDİR CYL
<b>KTK 0553</b>	SL511301-A/B	4	4

MOTOR TİPİ / DESCRIPTION

MAZDA 3500 CC SL - DIESEL



Oem numbers are only for comparison and must not be mentioned on invoices

[klotzetechnik.de](http://klotzetechnik.de)

# MAZDA

KRANK MİLİ / CRANKSHAFT



Klötze No REF.	ORJİNAL NO REFERENCE (OEM)	BALTA COUNTERWEIGHTS	SİLİNDİR CYL
<b>KTK 0554</b>	SH511301- A/B	4	4
MOTOR TİPİ / DESCRIPTION			
MAZDA 3600 CC SH - DIESEL			



Klötze No REF.	ORJİNAL NO REFERENCE (OEM)	BALTA COUNTERWEIGHTS	SİLİNDİR CYL
<b>KTK 0555</b>	TF2011300A	8	4
MOTOR TİPİ / DESCRIPTION			
MAZDA 4000 CC - DIESEL			



Klötze No REF.	ORJİNAL NO REFERENCE (OEM)	BALTA COUNTERWEIGHTS	SİLİNDİR CYL
<b>KTK 0556</b>	L59111300	8	4
MOTOR TİPİ / DESCRIPTION			
MAZDA 6 2.0 TD - DIESEL GÜÇLENDİRİLMİŞ / NITRIDED			



Klötze No REF.	ORJİNAL NO REFERENCE (OEM)	BALTA COUNTERWEIGHTS	SİLİNDİR CYL
<b>KTK 0557</b>	SH0111300C	8	4
MOTOR TİPİ / DESCRIPTION			
MAZDA CX-5 (SKYACTIVE-D SH) - DIESEL			



Klötze No REF.	ORJİNAL NO REFERENCE (OEM)	BALTA COUNTERWEIGHTS	SİLİNDİR CYL
<b>KTK 0558</b>	WL0111300	8	4
MOTOR TİPİ / DESCRIPTION			
MAZDA B 2500 TD 12 VALF WL - DIESEL			



Oem numbers are only for comparison and must not be mentioned on invoices

[klotzetechnik.de](http://klotzetechnik.de)

# MAZDA

KRANK MİLİ / CRANKSHAFT



Klötze No REF.	ORJINAL NO REFERENCE (OEM)	BALTA COUNTERWEIGHTS	SİLİNDİR CYL
<b>KTK 0559</b>	V101-11-301	8	4

MOTOR TİPİ / DESCRIPTION

MAZDA 4100 CC - DIESEL



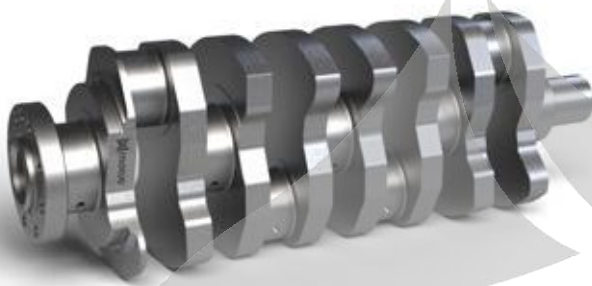
Klötze No REF.	ORJINAL NO REFERENCE (OEM)	BALTA COUNTERWEIGHTS	SİLİNDİR CYL
<b>KTK 0560</b>	R2AA11300A	8	4

MOTOR TİPİ / DESCRIPTION

MAZDA 3 - 6 - CX7 / 2.2 DIESEL ENGINE / ENGINE KODU : R2AA & R2BF  
GÜÇLENDİRİLMİŞ / NITRIDED

# HYUNDAI

KRANK MİLİ / CRANKSHAFT



Klötze No REF.	ORJINAL NO REFERENCE (OEM)	BALTA COUNTERWEIGHTS	SİLİNDİR CYL
<b>KTK 0882</b>	23110-2F110 / 651F6-2FU00	8	4

MOTOR TİPİ / DESCRIPTION

HYUNDAI TUCSON - SPORTAGE - SANTAFE 2.2 CRDI - D4HB DIESEL ENGINE  
GÜÇLENDİRİLMİŞ / NITRIDED



Klötze No REF.	ORJINAL NO REFERENCE (OEM)	BALTA COUNTERWEIGHTS	SİLİNDİR CYL
<b>KTK 0883</b>	23110-27420	8	4

MOTOR TİPİ / DESCRIPTION

HYUNDAI TUCSON - SANTAFE 2.0 CRDI D4EA - 4DEB DIESEL ENGINE GÜÇLENDİRİLMİŞ / NITRIDED



Oem numbers are only for comparison and must not be mentioned on invoices

[klotzetechnik.de](http://klotzetechnik.de)

# HYUNDAI

KRANK MİLİ / CRANKSHAFT



Klötze No REF.	ORJINAL NO REFERENCE (OEM)	BALTA COUNTERWEIGHTS	SİLİNDİR CYL
<b>KTK 0900</b>	23111-42002 / 23111-42901	4	4
MOTOR TİPİ / DESCRIPTION			
HYUNDAI D4BB H-100 MINIBUS / PICKUP - DIESEL			



Klötze No REF.	ORJINAL NO REFERENCE (OEM)	BALTA COUNTERWEIGHTS	SİLİNDİR CYL
<b>KTK 0908</b>	23111-42002 / 23111-42901	4	4
MOTOR TİPİ / DESCRIPTION			
HYUNDAI D4BB H-100 MINIBUS / PICKUP - DIESEL GÜÇLENDİRİLMİŞ / NITRIDED			



Klötze No REF.	ORJINAL NO REFERENCE (OEM)	BALTA COUNTERWEIGHTS	SİLİNDİR CYL
<b>KTK 0913</b>	23111-42902	4	4
MOTOR TİPİ / DESCRIPTION			
HYUNDAI D4BB 2600 PICKUP , T2 - DIESEL			



Klötze No REF.	ORJINAL NO REFERENCE (OEM)	BALTA COUNTERWEIGHTS	SİLİNDİR CYL
<b>KTK 0915</b>	23110-27500	4	3
MOTOR TİPİ / DESCRIPTION			
HYUNDAI ACCENT 1.5 CRDI D3EA DIESEL ENGINE			



Klötze No REF.	ORJINAL NO REFERENCE (OEM)	BALTA COUNTERWEIGHTS	SİLİNDİR CYL
<b>KTK 0916</b>	23111-42011 / 23111-42012	4	4
MOTOR TİPİ / DESCRIPTION			
HYUNDAI STAREX H-2500 TURBO - D4BH DIESEL ENGINE - GÜÇLENDİRİLMİŞ / NITRIDED			



Oem numbers are only for comparison and must not be mentioned on invoices

[klotzetechnik.de](http://klotzetechnik.de)

# HYUNDAI

KRANK MILİ / CRANKSHAFT



Klötze No REF.	ORJINAL NO REFERENCE (OEM)	BALTA COUNTERWEIGHTS	SİLİNDİR CYL
<b>KTK 0917</b>	23110-4A000 / 23110-4A010	8	4

MOTOR TİPİ / DESCRIPTION

HYUNDAI STAREX - H1 - 2500 CRDI 140 HP - D4CB DIESEL ENGINE GÜÇLENDİRİLMİŞ / NITRIDED



Klötze No REF.	ORJINAL NO REFERENCE (OEM)	BALTA COUNTERWEIGHTS	SİLİNDİR CYL
<b>KTK 0919</b>	23110-2A601	8	4

MOTOR TİPİ / DESCRIPTION

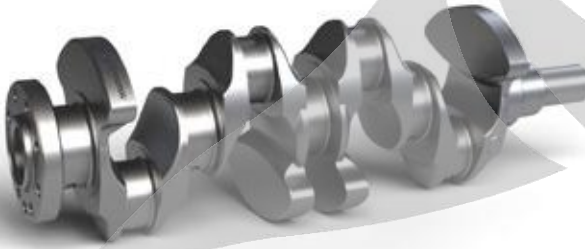
HYUNDAI ERA 1,5 CRDI D4FA/D4FB DIESEL ENGINE GÜÇLENDİRİLMİŞ / NITRIDED



Klötze No REF.	ORJINAL NO REFERENCE (OEM)	BALTA COUNTERWEIGHTS	SİLİNDİR CYL
<b>KTK 0920</b>	23111-2A701	4	4

MOTOR TİPİ / DESCRIPTION

HYUNDAI BLUE - ELENTRA - ERA 1.5 - 1.6 CRDI U16 D4FA DIESEL ENGINE STROK: 42.25  
GÜÇLENDİRİLMİŞ / NITRIDED



Klötze No REF.	ORJINAL NO REFERENCE (OEM)	BALTA COUNTERWEIGHTS	SİLİNDİR CYL
<b>KTK 0921</b>	23110-2A502 / 23110-2A510	4	4

MOTOR TİPİ / DESCRIPTION

HYUNDAI İ20 - İX20 - TROY 1,4 CRDI - U14 D4FC DIESEL ENGINE STROK: 39,50  
GÜÇLENDİRİLMİŞ / NITRIDED



Klötze No REF.	ORJINAL NO REFERENCE (OEM)	BALTA COUNTERWEIGHTS	SİLİNDİR CYL
<b>KTK 0922</b>	23111-26400	8	4

MOTOR TİPİ / DESCRIPTION

HYUNDAI ACCENT ERA & GETZ 14 CC - G4EE BENZİN ENGINE



Oem numbers are only for comparison and must not be mentioned on invoices

[klotzetechnik.de](http://klotzetechnik.de)

# HYUNDAI

KRANK MİLİ / CRANKSHAFT



Klötze No REF.	ORJINAL NO REFERENCE (OEM)	BALTA COUNTERWEIGHTS	SİLİNDİR CYL
<b>KTK 0923</b>	23111-261001 / 23111-26101 / 23110-26101	8	4

MOTOR TİPİ / DESCRIPTION

HYUNDAI ACCENT 1.6 CC - G4ED BENZİN ENGINE - GÜÇLENDİRİLMİŞ / NITRIDED



Klötze No REF.	ORJINAL NO REFERENCE (OEM)	BALTA COUNTERWEIGHTS	SİLİNDİR CYL
<b>KTK 0924</b>	23110-2B100	4	4

MOTOR TİPİ / DESCRIPTION

HYUNDAI ACCENT BLUE - İ20 - İ30 - 1.4 G4FA BENZİN ENGINE - GÜÇLENDİRİLMİŞ / NITRIDED



Klötze No REF.	ORJINAL NO REFERENCE (OEM)	BALTA COUNTERWEIGHTS	SİLİNDİR CYL
<b>KTK 0925</b>	23110-03221	8	4

MOTOR TİPİ / DESCRIPTION

HYUNDAI İ20 1.2 CC / G4LA BENZİN ENGINE - GÜÇLENDİRİLMİŞ / NITRIDED



Klötze No REF.	ORJINAL NO REFERENCE (OEM)	BALTA COUNTERWEIGHTS	SİLİNDİR CYL
<b>KTK 0926</b>	23110 - 2F310 / 6F0362FH00	4	4

MOTOR TİPİ / DESCRIPTION

HYUNDAI İX35 (10 - 15) 2.0 D4HA DIESEL ENGINE - GÜÇLENDİRİLMİŞ / NITRIDED (WITHOUT GEAR)



Oem numbers are only for comparison and must not be mentioned on invoices

[klotzetechnik.de](http://klotzetechnik.de)

# HONDA

KRANK MİLİ / CRANKSHAFT



Klötze No REF.	ORJİNAL NO REFERENCE (OEM)	BALTA COUNTERWEIGHTS	SİLİNDİR CYL
KTK 0740	13310PM6G01	8	4
MOTOR TİPİ / DESCRIPTION			
HONDA CIVIC 1.6 BENZİN ENGINE D16 - D16Y (1996 - 2001) FLANGE 28 MM - GÜÇLENDİRİLMİŞ / NITRIDED			



Klötze No REF.	ORJİNAL NO REFERENCE (OEM)	BALTA COUNTERWEIGHTS	SİLİNDİR CYL
KTK 0741	13310PLHG00	8	4
MOTOR TİPİ / DESCRIPTION			
HONDA CIVIC 1.6 BENZİN ENGINE D16 (1990 - 96) FLANGE 24 MM GÜÇLENDİRİLMİŞ / NITRIDED			



Klötze No REF.	ORJİNAL NO REFERENCE (OEM)	BALTA COUNTERWEIGHTS	SİLİNDİR CYL
KTK 0742	13310RNFE00	4	4
MOTOR TİPİ / DESCRIPTION			
HONDA CIVIC 1.6 BENZİN ENGINE R16 - R18 (2007 - 2013) GÜÇLENDİRİLMİŞ / NITRIDED			

# ISUZU

KRANK MİLİ / CRANKSHAFT



Klötze No REF.	ORJİNAL NO REFERENCE (OEM)	BALTA COUNTERWEIGHTS	SİLİNDİR CYL
KTK 0700	8971129812 / 8971465202	8	4
MOTOR TİPİ / DESCRIPTION			
ISUZU CHAMPION TRUCK 4HF1 ( NPR 66 CHAMPION ) 4HG1 (URBAN - RAYBUS)- DIESEL			



Oem numbers are only for comparison and must not be mentioned on invoices

[klotzetechnik.de](http://klotzetechnik.de)



# ISUZU

KRANK MILI / CRANKSHAFT



Klötze No REF.	ORJINAL NO REFERENCE (OEM)	BALTA COUNTERWEIGHTS	SİLİNDİR CYL
<b>KTK 0701</b>	5123101631	4	4

MOTOR TİPİ / DESCRIPTION

ISUZU NPR 59 4BD1 4BB1 - DIESEL



Klötze No REF.	ORJINAL NO REFERENCE (OEM)	BALTA COUNTERWEIGHTS	SİLİNDİR CYL
<b>KTK 0702</b>	1123104071 / 1123104370	8	6

MOTOR TİPİ / DESCRIPTION

ISUZU 6BD1T 6BB1 - DIESEL



Klötze No REF.	ORJINAL NO REFERENCE (OEM)	BALTA COUNTERWEIGHTS	SİLİNDİR CYL
<b>KTK 0703</b>	8944436620 / 8944552401	4	4

MOTOR TİPİ / DESCRIPTION

ISUZU NKR 4JB1 - DIESEL



Klötze No REF.	ORJINAL NO REFERENCE (OEM)	BALTA COUNTERWEIGHTS	SİLİNDİR CYL
<b>KTK 0704</b>	8944163732	8	4

MOTOR TİPİ / DESCRIPTION

ISUZU NPR 58 4BE1 - DIESEL



Klötze No REF.	ORJINAL NO REFERENCE (OEM)	BALTA COUNTERWEIGHTS	SİLİNDİR CYL
<b>KTK 0705</b>	8973525342	8	4

MOTOR TİPİ / DESCRIPTION

ISUZU NQR 4HE1 - 4HK1 ( NOVO - TURKUAZ - CITIMARK - CITIBUS ) - DIESEL



Oem numbers are only for comparison and must not be mentioned on invoices

[klotzetechnik.de](http://klotzetechnik.de)

# TOYOTA

KRANK MİLİ / CRANKSHAFT



Klötze No REF.	ORJİNAL NO REFERENCE (OEM)	BALTA COUNTERWEIGHTS	SİLİNDİR CYL
KTK 0720	13401-11050	8	4

MOTOR TİPİ / DESCRIPTION

TOYOTA COROLLA 1.3 BENZİN ENGINE 2E 1300cc



Klötze No REF.	ORJİNAL NO REFERENCE (OEM)	BALTA COUNTERWEIGHTS	SİLİNDİR CYL
KTK 0721	13411-02901	8	4

MOTOR TİPİ / DESCRIPTION

TOYOTA COROLLA 1.6 BENZİN ENGINE 4AFE/4AGE 1600cc



Klötze No REF.	ORJİNAL NO REFERENCE (OEM)	BALTA COUNTERWEIGHTS	SİLİNDİR CYL
KTK 0723	13401 - 22030	8	4

MOTOR TİPİ / DESCRIPTION

TOYOTA COROLLA VVTI 3ZZ 1.6 BENZİN ENGINE



Klötze No REF.	ORJİNAL NO REFERENCE (OEM)	BALTA COUNTERWEIGHTS	SİLİNDİR CYL
KTK 0724	13401-33011	4	4

MOTOR TİPİ / DESCRIPTION

TOYOTA 1.4 D4D (2 KEYWAYS) -1ND DIESEL ENGINE - GÜÇLENDİRİLMİŞ / NITRIDED



Klötze No REF.	ORJİNAL NO REFERENCE (OEM)	BALTA COUNTERWEIGHTS	SİLİNDİR CYL
KTK 0725	13401-33011	4	4

MOTOR TİPİ / DESCRIPTION

TOYOTA 1.4 D4D (1 KEYWAY) -1ND DIESEL ENGINE - GÜÇLENDİRİLMİŞ / NITRIDED



Oem numbers are only for comparison and must not be mentioned on invoices

[klotzetechnik.de](http://klotzetechnik.de)

# TOYOTA

KRANK MİLİ / CRANKSHAFT



Klötze No REF.	ORJİNAL NO REFERENCE (OEM)	BALTA COUNTERWEIGHTS	SİLİNDİR CYL
<b>KTK 0726</b>	13401 - 0L030 - 13401 - 0L100	8	4
<b>MOTOR TİPİ / DESCRIPTION</b>			
TOYOTA HILUX - VIGO 2KD 2.5 DIESEL ENGINE (STROKE 103 mm) - EURO4 GÜÇLENDİRİLMİŞ / NITRIDED			



Klötze No REF.	ORJİNAL NO REFERENCE (OEM)	BALTA COUNTERWEIGHTS	SİLİNDİR CYL
<b>KTK 0727</b>	13401 - 47011	4	4
<b>MOTOR TİPİ / DESCRIPTION</b>			
TOYOTA - COROLLA - AURIS - YARIS - 1.33 CC - 1NRFE BENZİN ENGINE			



Klötze No REF.	ORJİNAL NO REFERENCE (OEM)	BALTA COUNTERWEIGHTS	SİLİNDİR CYL
<b>KTK 0728</b>	13401 - 05010 - 13401 - 54040	4	4
<b>MOTOR TİPİ / DESCRIPTION</b>			
TOYOTA HILUX 2.4 DIESEL ENGINE - 2L GÜÇLENDİRİLMİŞ / NITRIDED			



Klötze No REF.	ORJİNAL NO REFERENCE (OEM)	BALTA COUNTERWEIGHTS	SİLİNDİR CYL
<b>KTK 0729</b>	13401-30030 - 13401-30060	4	4
<b>MOTOR TİPİ / DESCRIPTION</b>			
TOYOTA HILUX 06-13 // LANDCRUISER 05- 2KD & 2KDFTV (STROKE 93,8 mm) - DIESEL - GÜÇLENDİRİLMİŞ / NITRIDED			



Klötze No REF.	ORJİNAL NO REFERENCE (OEM)	BALTA COUNTERWEIGHTS	SİLİNDİR CYL
<b>KTK 1305</b>	11217812985	4	4
<b>MOTOR TİPİ / DESCRIPTION</b>			
TOYOTA VERSO 1.6 DIESEL ENGINE - GÜÇLENDİRİLMİŞ / NITRIDED			



Oem numbers are only for comparison and must not be mentioned on invoices

[klotzetechnik.de](http://klotzetechnik.de)

# MITSUBISHI

KRANK MİLİ / CRANKSHAFT



Klötze No REF.	ORJİNAL NO REFERENCE (OEM)	BALTA COUNTERWEIGHTS	SİLİNDİR CYL
<b>KTK 0900</b>	23111-42002 / 23111-42901	4	4

MOTOR TİPİ / DESCRIPTION

MITSUBISHI 4D56 L200 - DIESEL



Klötze No REF.	ORJİNAL NO REFERENCE (OEM)	BALTA COUNTERWEIGHTS	SİLİNDİR CYL
<b>KTK 0901</b>	ME 013668	4	4

MOTOR TİPİ / DESCRIPTION

MITSUBISHI 4D34 CANTER HD FE 449, FE 635, FE 639 - DIESEL



Klötze No REF.	ORJİNAL NO REFERENCE (OEM)	BALTA COUNTERWEIGHTS	SİLİNDİR CYL
<b>KTK 0902</b>	ME 013667	4	4

MOTOR TİPİ / DESCRIPTION

MITSUBISHI 4D31 CANTER FE 444, FE 304, FB 211 - DIESEL



Klötze No REF.	ORJİNAL NO REFERENCE (OEM)	BALTA COUNTERWEIGHTS	SİLİNDİR CYL
<b>KTK 0903</b>	ME 01734	4	4

MOTOR TİPİ / DESCRIPTION

MITSUBISHI 4D34 -4D35 T CANTER TURBO FE 659 T - DIESEL



Klötze No REF.	ORJİNAL NO REFERENCE (OEM)	BALTA COUNTERWEIGHTS	SİLİNDİR CYL
<b>KTK 0904</b>	ME 018297	4	4

MOTOR TİPİ / DESCRIPTION

MITSUBISHI 4D34 CANTER FE 659 - DIESEL



Oem numbers are only for comparison and must not be mentioned on invoices

[klotzetechnik.de](http://klotzetechnik.de)

# MITSUBISHI

KRANK MİLİ / CRANKSHAFT



Klötze No REF.	ORJINAL NO REFERENCE (OEM)	BALTA COUNTERWEIGHTS	SİLİNDİR CYL
<b>KTK 0906</b>	ME 193484	8	4

MOTOR TİPİ / DESCRIPTION

MITSUBISHI M42T 859 EURO 4 - DIESEL - GÜÇLENDİRİLMİŞ / NITRIDED



Klötze No REF.	ORJINAL NO REFERENCE (OEM)	BALTA COUNTERWEIGHTS	SİLİNDİR CYL
<b>KTK 0907</b>	1100A028 / 1100A135	4	4

MOTOR TİPİ / DESCRIPTION

MITSUBISHI L 200 CR 4D56U 2500 DIESEL ENGINE - GÜÇLENDİRİLMİŞ / NITRIDED



Klötze No REF.	ORJINAL NO REFERENCE (OEM)	BALTA COUNTERWEIGHTS	SİLİNDİR CYL
<b>KTK 0908</b>	23111-42002 / 23111-42901	4	4

MOTOR TİPİ / DESCRIPTION

MITSUBISHI L 300 4D56 DIESEL ENGINE - GÜÇLENDİRİLMİŞ / NITRIDED



Klötze No REF.	ORJINAL NO REFERENCE (OEM)	BALTA COUNTERWEIGHTS	SİLİNDİR CYL
<b>KTK 0909</b>	40256520	8	4

MOTOR TİPİ / DESCRIPTION

MITSUBISHI S4Q DIESEL MOTOR LS MTRON GÜÇLENDİRİLMİŞ / NITRIDED



Klötze No REF.	ORJINAL NO REFERENCE (OEM)	BALTA COUNTERWEIGHTS	SİLİNDİR CYL
<b>KTK 0910</b>	1100A261	8	4

MOTOR TİPİ / DESCRIPTION

MITSUBISHI L 200 EURO 6 DIESEL ENGINE 4N15 - GÜÇLENDİRİLMİŞ / NITRIDED



Oem numbers are only for comparison and must not be mentioned on invoices

[klotzetechnik.de](http://klotzetechnik.de)

# MITSUBISHI

KRANK MİLİ / CRANKSHAFT



Klötze No REF.	ORJINAL NO REFERENCE (OEM)	BALTA COUNTERWEIGHTS	SİLİNDİR CYL
KTK 0916	23111-42011 / 23111-42012	4	4

MOTOR TİPİ / DESCRIPTION

MITSUBISHI L300 4D56 2500 CC - DIESEL - GÜÇLENDİRİLMİŞ / NITRIDED



Klötze No REF.	ORJINAL NO REFERENCE (OEM)	BALTA COUNTERWEIGHTS	SİLİNDİR CYL
KTK 0918	MD 017152	4	4

MOTOR TİPİ / DESCRIPTION

MITSUBISHI 4D32 CANTER FE 515 - DIESEL



Oem numbers are only for comparison and must not be mentioned on invoices

[klotzetechnik.de](http://klotzetechnik.de)

# NISSAN

KRANK MİLİ / CRANKSHAFT



Klötze No REF.	ORJİNAL NO REFERENCE (OEM)	BALTA COUNTERWEIGHTS	SİLİNDİR CYL
<b>KTK 0864</b>	8200805743 / 122010072R	8	4
MOTOR TİPİ / DESCRIPTION			
NISSAN NAVARA EURO 6 - 2.3 DIESEL ENGINE GÜÇLENDİRİLMİŞ / NITRIDED			



Klötze No REF.	ORJİNAL NO REFERENCE (OEM)	BALTA COUNTERWEIGHTS	SİLİNDİR CYL
<b>KTK 0865</b>	122016377R M	8	4
MOTOR TİPİ / DESCRIPTION			
NISSAN QASHQAI - X TRAIL R9M 1.6 DIESEL ENGINE - GÜÇLENDİRİLMİŞ / NITRIDED			



Klötze No REF.	ORJİNAL NO REFERENCE (OEM)	BALTA COUNTERWEIGHTS	SİLİNDİR CYL
<b>KTK 0880</b>	12200-AD210	8	4
MOTOR TİPİ / DESCRIPTION			
NISSAN NAVARA - PATHFINDER - FRONTIER - YD25DDTI - DIESEL - GÜÇLENDİRİLMİŞ / NITRIDED			



Klötze No REF.	ORJİNAL NO REFERENCE (OEM)	BALTA COUNTERWEIGHTS	SİLİNDİR CYL
<b>KTK 0881</b>	12200-5X00A / 12200-KH40A	8	4
MOTOR TİPİ / DESCRIPTION			
NISSAN NAVARA YD25DDTI D40 EURO5 - 160 - 190 HP - DIESEL - GÜÇLENDİRİLMİŞ / NITRIDED			



Klötze No REF.	ORJİNAL NO REFERENCE (OEM)	BALTA COUNTERWEIGHTS	SİLİNDİR CYL
<b>KTK 0884</b>	RB26DETT	8	6
MOTOR TİPİ / DESCRIPTION			
NISSAN SKYLINE GTR R33 - 2.6 LT BENZİN AŞIRI BESLEME GÜÇLENDİRİLMİŞ / NITRIDED			



Oem numbers are only for comparison and must not be mentioned on invoices

[klotzetechnik.de](http://klotzetechnik.de)



*TRUCK / BUS GROUP*



# MERCEDES TRUCK

KRANK MİLİ / CRANKSHAFT



Klötze No REF.	ORJİNAL NO REFERENCE (OEM)	BALTA COUNTERWEIGHTS	SİLİNDİR CYL
<b>KTK 1000</b>	401 030 1901 / 401 030 1501	4	V6

MOTOR TİPİ / DESCRIPTION

MERCEDES BENZ OM 401 V6 OLD MODEL - DIESEL



Klötze No REF.	ORJİNAL NO REFERENCE (OEM)	BALTA COUNTERWEIGHTS	SİLİNDİR CYL
<b>KTK 1011</b>	401 030 2301 / 401 030 2501	4	V6

MOTOR TİPİ / DESCRIPTION

MERCEDES BENZ OM 401-V6 LA - DIESEL - GÜÇLENDİRİLMİŞ / NITRIDED



Klötze No REF.	ORJİNAL NO REFERENCE (OEM)	BALTA COUNTERWEIGHTS	SİLİNDİR CYL
<b>KTK 1020</b>	421 030 2401 / 421 030 2501 / 421 030 1701	4	V6

MOTOR TİPİ / DESCRIPTION

MERCEDES BENZ OM 421-V6 - DIESEL



Klötze No REF.	ORJİNAL NO REFERENCE (OEM)	BALTA COUNTERWEIGHTS	SİLİNDİR CYL
<b>KTK 1031</b>	441 030 2101 / 441 030 1701 / 441 030 2201	4	V6

MOTOR TİPİ / DESCRIPTION

MERCEDES BENZ OM 441-V6 - DIESEL - ENGINE A/LA - GÜÇLENDİRİLMİŞ / NITRIDED



Klötze No REF.	ORJİNAL NO REFERENCE (OEM)	BALTA COUNTERWEIGHTS	SİLİNDİR CYL
<b>KTK 1040</b>	422 030 4301 / 422 030 4401 / 422 030 3701	6	V8

MOTOR TİPİ / DESCRIPTION

MERCEDES BENZ OM 422-V8 - DIESEL - ENGINE



Oem numbers are only for comparison and must not be mentioned on invoices

[klotzetechnik.de](http://klotzetechnik.de)

# MERCEDES TRUCK

KRANK MİLİ / CRANKSHAFT



Klötze No REF.	ORJİNAL NO REFERENCE (OEM)	BALTA COUNTERWEIGHTS	SİLİNDİR CYL
<b>KTK 1041</b>	442 030 0801 / 442 030 0301 / 442 030 0401	6	V8
MOTOR TİPİ / DESCRIPTION			
MERCEDES BENZ OM 442 A / LA -V8 - DIESEL - ENGINE			



Klötze No REF.	ORJİNAL NO REFERENCE (OEM)	BALTA COUNTERWEIGHTS	SİLİNDİR CYL
<b>KTK 1050</b>	402 030 3001 / 402 030 3201 / 402 030 2301	6	V8
MOTOR TİPİ / DESCRIPTION			
MERCEDES BENZ OM 402-V8 - DIESEL - ENGINE			



Klötze No REF.	ORJİNAL NO REFERENCE (OEM)	BALTA COUNTERWEIGHTS	SİLİNDİR CYL
<b>KTK 1060</b>	541 030 0201 / 541 030 0601 / 541 030 0801	4	V6
MOTOR TİPİ / DESCRIPTION			
MERCEDES BENZ OM 501 / 541-V6 - DIESEL - ENGINE A/LA - GÜÇLENDİRİLMİŞ / NITRIDED			



Klötze No REF.	ORJİNAL NO REFERENCE (OEM)	BALTA COUNTERWEIGHTS	SİLİNDİR CYL
<b>KTK 1070</b>	355 030 6701	8	6
MOTOR TİPİ / DESCRIPTION			
MERCEDES BENZ OM 355 (Flange: 8 Bolt Holes - 1 Dowel) - DIESEL			



Klötze No REF.	ORJİNAL NO REFERENCE (OEM)	BALTA COUNTERWEIGHTS	SİLİNDİR CYL
<b>KTK 1071</b>	355 030 6801	8	6
MOTOR TİPİ / DESCRIPTION			
MERCEDES BENZ OM 355-T A (Flange : 12 Bolt Holes - 1 Dowel) - DIESEL			



Oem numbers are only for comparison and must not be mentioned on invoices

[klotzetechnik.de](http://klotzetechnik.de)

# MERCEDES TRUCK

KRANK MİLİ / CRANKSHAFT



Klötze No REF.	ORJINAL NO REFERENCE (OEM)	BALTA COUNTERWEIGHTS	SİLİNDİR CYL
<b>KTK 1110</b>	352 030 3402 / 352 030 6802 / 352 030 7402	8	6
MOTOR TİPİ / DESCRIPTION			
MERCEDES BENZ OM 352 OLD MODEL - DIESEL			



Klötze No REF.	ORJINAL NO REFERENCE (OEM)	BALTA COUNTERWEIGHTS	SİLİNDİR CYL
<b>KTK 1111</b>	352 030 3702 / 352 030 7802 / 352 030 5802	8	6
MOTOR TİPİ / DESCRIPTION			
MERCEDES BENZ OM 352 NEW MODEL - DIESEL			



Klötze No REF.	ORJINAL NO REFERENCE (OEM)	BALTA COUNTERWEIGHTS	SİLİNDİR CYL
<b>KTK 1150</b>	457 030 0201 / 457 031 0001 / 496 030 0001	8	6
MOTOR TİPİ / DESCRIPTION			
MERCEDES BENZ OM 457 LA / HLA - DIESEL			



Klötze No REF.	ORJINAL NO REFERENCE (OEM)	BALTA COUNTERWEIGHTS	SİLİNDİR CYL
<b>KTK 1160</b>	906 030 0301 / 906 030 0902 / 906 030 0702	6	6
MOTOR TİPİ / DESCRIPTION			
MERCEDES BENZ OM 906 LA EURO 2 / 3 STROKE 130 mm FLANGE 98 mm - DIESEL GÜÇLENDİRİLMİŞ / NITRIDED			



Klötze No REF.	ORJINAL NO REFERENCE (OEM)	BALTA COUNTERWEIGHTS	SİLİNDİR CYL
<b>KTK 1161</b>	906 030 0602 / 906 030 0502 / 906 030 1102	6	6
MOTOR TİPİ / DESCRIPTION			
MERCEDES BENZ OM 906 LA EURO 2 / 3 STROKE 130 mm FLANGE 103 mm - DIESEL GÜÇLENDİRİLMİŞ / NITRIDED			



Oem numbers are only for comparison and must not be mentioned on invoices

[klotzetechnik.de](http://klotzetechnik.de)

# MERCEDES TRUCK

KRANK MİLİ / CRANKSHAFT



Klötze No REF.	ORJİNAL NO REFERENCE (OEM)	BALTA COUNTERWEIGHTS	SİLİNDİR CYL
KTK 1170	904 030 0301 / 904 030 0702	4	4

MOTOR TİPİ / DESCRIPTION

MERCEDES BENZ OM 904 ATEGO EURO 2 / 3 STROKE 130 MM FLANGE 98 MM - DIESEL  
GÜÇLENDİRİLMİŞ / NITRIDED



Klötze No REF.	ORJİNAL NO REFERENCE (OEM)	BALTA COUNTERWEIGHTS	SİLİNDİR CYL
KTK 1171	904 030 1002 / 904 030 0701 / 904 030 0801	4	4

MOTOR TİPİ / DESCRIPTION

MERCEDES BENZ OM 904 ATEGO EURO 2 / 3 STROKE 130 MM FLANGE 103 MM - DIESEL  
GÜÇLENDİRİLMİŞ / NITRIDED

# MAN TRUCK

KRANK MİLİ / CRANKSHAFT



Klötze No REF.	ORJİNAL NO REFERENCE (OEM)	BALTA COUNTERWEIGHTS	SİLİNDİR CYL
KTK 2100	51 02101 7405 / 51 02101 7390	8	6

MOTOR TİPİ / DESCRIPTION

MAN D2566 / 8 D2556 - DIESEL



Klötze No REF.	ORJİNAL NO REFERENCE (OEM)	BALTA COUNTERWEIGHTS	SİLİNDİR CYL
KTK 2101	51 02101 7741 / 51 02101 7515 / 51 02101 7708 / 51 02101 6037	8	6

MOTOR TİPİ / DESCRIPTION

MAN D2566 / 4 D2556 - DIESEL



Oem numbers are only for comparison and must not be mentioned on invoices

[klotzetechnik.de](http://klotzetechnik.de)

# MAN TRUCK

KRANK MİLİ / CRANKSHAFT



Klötze No REF.	ORJINAL NO REFERENCE (OEM)	BALTA COUNTERWEIGHTS	SİLİNDİR CYL
<b>KTk 2110</b>	51 02101 6081 / 51 02100 6019	8	6
MOTOR TİPİ / DESCRIPTION			
MAN D 2866 - DIESEL			



Klötze No REF.	ORJINAL NO REFERENCE (OEM)	BALTA COUNTERWEIGHTS	SİLİNDİR CYL
<b>KTk 2115</b>	51 02100 6018 / 51 02101 6082 / 51 02101 6038 / 51 02101 6044	8	6
MOTOR TİPİ / DESCRIPTION			
MAN D 2876 TGA - DIESEL - GÜÇLENDİRİLMİŞ / NITRIDED			



Klötze No REF.	ORJINAL NO REFERENCE (OEM)	BALTA COUNTERWEIGHTS	SİLİNDİR CYL
<b>KTk 2116</b>	51 02101 0673	8	6
MOTOR TİPİ / DESCRIPTION			
MAN D 2066 TGA - DIESEL - GÜÇLENDİRİLMİŞ / NITRIDED			



Klötze No REF.	ORJINAL NO REFERENCE (OEM)	BALTA COUNTERWEIGHTS	SİLİNDİR CYL
<b>KTk 2120</b>	51 02101 7123	8	6
MOTOR TİPİ / DESCRIPTION			
MAN D 2156 IKARUS - DIESEL			



Klötze No REF.	ORJINAL NO REFERENCE (OEM)	BALTA COUNTERWEIGHTS	SİLİNDİR CYL
<b>KTk 2130</b>	51 02101 6022 / 51 02101 6090 / 51 02101 6050 / 51 02101 0608	8	6
MOTOR TİPİ / DESCRIPTION			
MAN D 0836 - DIESEL			



Oem numbers are only for comparison and must not be mentioned on invoices

[klotzetechnik.de](http://klotzetechnik.de)

# SCANIA TRUCK

KRANK MİLİ / CRANKSHAFT



Klötze No REF.	ORJINAL NO REFERENCE (OEM)	BALTA COUNTERWEIGHTS	SİLİNDİR CYL
<b>KTK 3200</b>	342060 / 130 8467 / 312739	8	6

MOTOR TİPİ / DESCRIPTION

SCANIA 112 DS 111-112-113 - DIESEL



Klötze No REF.	ORJINAL NO REFERENCE (OEM)	BALTA COUNTERWEIGHTS	SİLİNDİR CYL
<b>KTK 3210</b>	133 8810	8	6

MOTOR TİPİ / DESCRIPTION

SCANIA 94 - 310 DSC 09 - DIESEL



Klötze No REF.	ORJINAL NO REFERENCE (OEM)	BALTA COUNTERWEIGHTS	SİLİNDİR CYL
<b>KTK 3220</b>	1421506 / 1423374 / 1743584	8	6

MOTOR TİPİ / DESCRIPTION

SCANIA 124 360 DSC 12 - DIESEL



Klötze No REF.	ORJINAL NO REFERENCE (OEM)	BALTA COUNTERWEIGHTS	SİLİNDİR CYL
<b>KTK 3230</b>	370 850 / 134 0 620 / 137 9 666	6	V8

MOTOR TİPİ / DESCRIPTION

SCANIA 141-142-143 DS/C 14 - DIESEL



Klötze No REF.	ORJINAL NO REFERENCE (OEM)	BALTA COUNTERWEIGHTS	SİLİNDİR CYL
<b>KTK 3240</b>		12	6

MOTOR TİPİ / DESCRIPTION

DSC 08 - DIESEL



Oem numbers are only for comparison and must not be mentioned on invoices

[klotzetechnik.de](http://klotzetechnik.de)

# RENAULT TRUCK

KRANK MİLİ / CRANKSHAFT



Klötze No REF.	ORJINAL NO REFERENCE (OEM)	BALTA COUNTERWEIGHTS	SİLİNDİR CYL
<b>KTK 3800</b>	5600551684	8	6
MOTOR TİPİ / DESCRIPTION			
PREMIUM 400 - DIESEL - GÜÇLENDİRİLMİŞ / NITRIDED			

# DAF TRUCK

KRANK MİLİ / CRANKSHAFT



Klötze No REF.	ORJINAL NO REFERENCE (OEM)	BALTA COUNTERWEIGHTS	SİLİNDİR CYL
<b>KTK 3010</b>	00 9 1157 / 065 3687	6	6
MOTOR TİPİ / DESCRIPTION			
DAF 825 - DIESEL ENGINE DAF 2300			



Klötze No REF.	ORJINAL NO REFERENCE (OEM)	BALTA COUNTERWEIGHTS	SİLİNDİR CYL
<b>KTK 3020</b>	067 0906	6	6
MOTOR TİPİ / DESCRIPTION			
DAF 2800 / 3300 1160 DKC/L, DKX, DKF/L SERIE II - DIESEL			



Klötze No REF.	ORJINAL NO REFERENCE (OEM)	BALTA COUNTERWEIGHTS	SİLİNDİR CYL
<b>KTK 3030</b>	028 8836	6	6
MOTOR TİPİ / DESCRIPTION			
DAF 3300 ATI 3600 1160 ATI - DIESEL			



Oem numbers are only for comparison and must not be mentioned on invoices

[klotzetechnik.de](http://klotzetechnik.de)

# DAF TRUCK

KRANK MİLİ / CRANKSHAFT



Klötze No REF.	ORJİNAL NO REFERENCE (OEM)	BALTA COUNTERWEIGHTS	SİLİNDİR CYL
<b>KTK 3040</b>	129 7017 / 087 715	6	6
<b>MOTOR TİPİ / DESCRIPTION</b>			
DAF 95, DAF 85 CONICAL - DIESEL - GÜÇLENDİRİLMİŞ / NITRIDED			



Klötze No REF.	ORJİNAL NO REFERENCE (OEM)	BALTA COUNTERWEIGHTS	SİLİNDİR CYL
<b>KTK 3041</b>	129 7017 / 087 715	6	6
<b>MOTOR TİPİ / DESCRIPTION</b>			
DAF 95, DAF 85 STRAIGHT - DIESEL - GÜÇLENDİRİLMİŞ / NITRIDED			



Klötze No REF.	ORJİNAL NO REFERENCE (OEM)	BALTA COUNTERWEIGHTS	SİLİNDİR CYL
<b>KTK 3042</b>	129 1804 / 165 3898	8	6
<b>MOTOR TİPİ / DESCRIPTION</b>			
DAF XF - DIESEL - GÜÇLENDİRİLMİŞ / NITRIDED			

# VOLVO TRUCK

KRANK MİLİ / CRANKSHAFT



Klötze No REF.	ORJİNAL NO REFERENCE (OEM)	BALTA COUNTERWEIGHTS	SİLİNDİR CYL
<b>KTK 3090</b>		4	3
<b>MOTOR TİPİ / DESCRIPTION</b>			
VOLVO BOLINDER D 350 - DIESEL			



Oem numbers are only for comparison and must not be mentioned on invoices

[klotzetechnik.de](http://klotzetechnik.de)



# VOLVO TRUCK

KRANK MİLİ / CRANKSHAFT



Klötze No REF.	ORJINAL NO REFERENCE (OEM)	BALTA COUNTERWEIGHTS	SİLİNDİR CYL
<b>KTK 3100</b>	8194490 / 467709 / 154 5657 / 20381958	8	6

MOTOR TİPİ / DESCRIPTION

VOLVO TD 101-102 10 HOLES 10MM FLANGE - DIESEL



Klötze No REF.	ORJINAL NO REFERENCE (OEM)	BALTA COUNTERWEIGHTS	SİLİNDİR CYL
<b>KTK 3110</b>	8194359 / 8126780 / 8194456 / 20381957	8	6

MOTOR TİPİ / DESCRIPTION

VOLVO TD 102- TD 103 14 HOLES 14MM FLANGE - DIESEL



Klötze No REF.	ORJINAL NO REFERENCE (OEM)	BALTA COUNTERWEIGHTS	SİLİNDİR CYL
<b>KTK 3120</b>	6888740 / 470681-8 / 468617	8	6

MOTOR TİPİ / DESCRIPTION

VOLVO TD 120- 122 10 HOLES 10MM FLANGE - DIESEL



Klötze No REF.	ORJINAL NO REFERENCE (OEM)	BALTA COUNTERWEIGHTS	SİLİNDİR CYL
<b>KTK 3130</b>	8125583 / 478676-0	8	6

MOTOR TİPİ / DESCRIPTION

VOLVO TD 122- TD 123 14 HOLES 14MM FLANGE - DIESEL



Klötze No REF.	ORJINAL NO REFERENCE (OEM)	BALTA COUNTERWEIGHTS	SİLİNDİR CYL
<b>KTK 3140</b>	1547468-7 / 1547468 / 20533089	8	6

MOTOR TİPİ / DESCRIPTION

VOLVO D 12 / A/CD D12- FH12 - DIESEL



Oem numbers are only for comparison and must not be mentioned on invoices

[klotzetechnik.de](http://klotzetechnik.de)



Oem numbers are only for comparison and must not be mentioned on invoices

[klotzetechnik.de](http://klotzetechnik.de)

**NOT:**





TRUCK **SPARE PARTS**



**KLÖTZE**  
TECHNIC

[www.klotzetechnik.de](http://www.klotzetechnik.de)

Gesuchte Europäische  
**Qualität**

**Klötze Technic** ist ein in Deutschland ansässiger Hersteller und Lieferant von LKW-, Anhänger- und Bus-Ersatzteilen.

FOLLOW  
US

**#KLOTZETECHNIC**