

TRUCK **SPARE PARTS**

Gesuchte Europäische Qualität

**SPARE PARTS**

sought-after  
**quality**

# **BRAKE DISC FLYWHEEL WHEEL HUB**



**KLÖTZE**  
TECHNIC

[www.klotzetechnik.de](http://www.klotzetechnik.de)

**Klötze Technic** ist ein in Deutschland ansässiger Hersteller und Lieferant von LKW-, Anhänger- und Bus-Ersatzteilen.



**KLÖTZE**  
TECHNIC

Gesuchte Europäische  
**Qualität**

Klötze Technic is a Germany-based company specializing in truck, trailer, and bus spare parts. Together with our sales office in Turkey, we provide our customers with original spare parts of guaranteed quality. Our products are manufactured with superior German engineering.

Our main groups consist of Engine, Cooling System, Fuel System, Exhaust System, Clutch & Pedal, Gearbox, Propeller Shaft, Axles, Brake System, Hubs & Wheels, Suspension, Steering, Electrical System, Cabin, and Body.

At Klötze Technic, we strive to provide our customers with the highest quality products, competitive prices, and superior customer service.

#### **Our Mission:**

At Klötze Technic, we work to provide our customers with the highest quality and reliable spare parts for trucks, trailers, and buses.

Our high-quality products are manufactured with superior German engineering.

Our mission is to meet our customers' needs and provide them with the best customer service possible.

#### **Our Vision:**

At Klötze Technic, we aim to become a world-leading company in the field of truck, trailer, and bus spare parts.

Our vision is to provide our customers with the highest quality products, competitive prices, and superior customer service. In doing so, we aim to meet our customers' needs and ensure their satisfaction.

#### **Our Quality Policy:**

At Klötze Technic, quality and customer satisfaction are always our top priorities. Our products are manufactured with superior German engineering and are provided to our customers as original spare parts of guaranteed quality. Our quality policy is to provide our customers with the best quality products and meet their needs in the best way possible.

Customer satisfaction is always important to us.

**TRUCK SPARE PARTS**



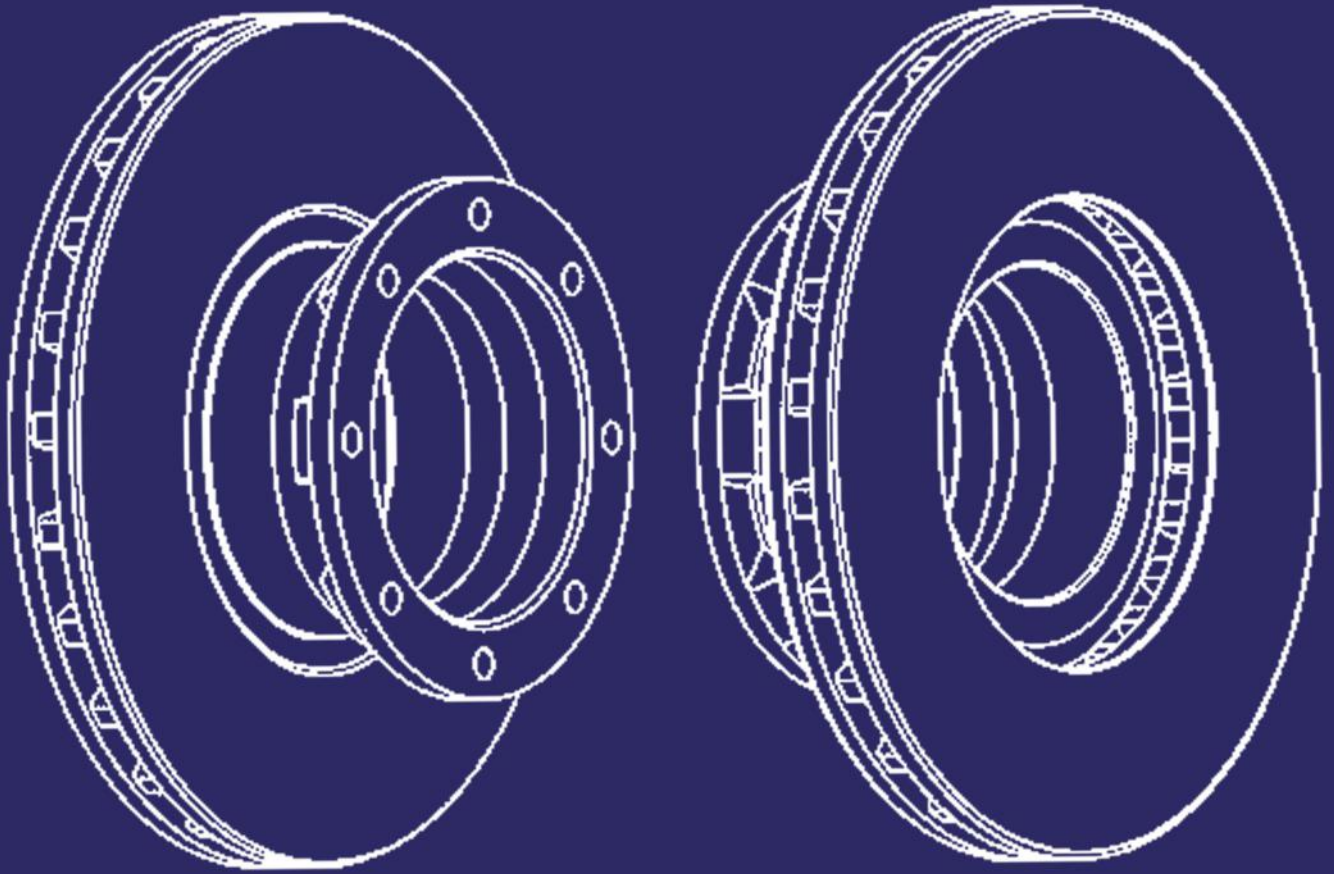
**KLÖTZE**  
TECHNIC

Gesuchte Europäische  
**Qualität**

[www.klotzetechnik.de](http://www.klotzetechnik.de)

**TRUCK SPARE PARTS**

Gesuchte Europäische  
**Qualität**



**KLÖTZE**  
TECHNIC

Gesuchte Europäische  
Qualität



**KLÖTZE**  
TECHNIC

[www.klotzetechnik.de](http://www.klotzetechnik.de)





Gesuchte Europäische  
Qualität



[klotzetechnik.de](http://klotzetechnik.de)



[klotzetechnik.de](http://klotzetechnik.de)





**KLÖTZE**  
TECHNIC

Gesuchte Europäische  
**Qualität**



[www.klotzetechnik.de](http://www.klotzetechnik.de)



# Gesuchte Europäische Qualität

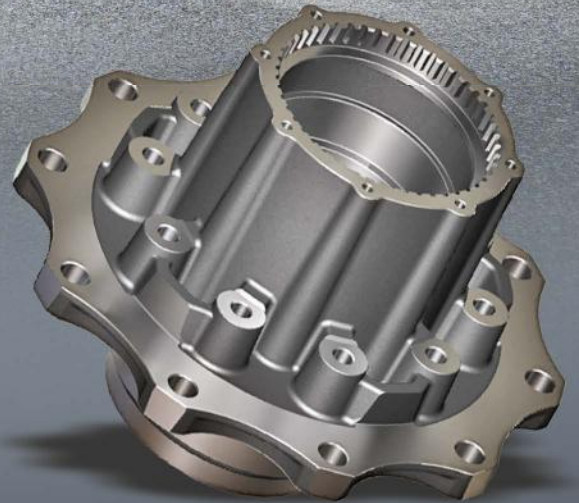


**KLÖTZE**  
TECHNIC

Gesuchte Europäische  
**Qualität**



**KLÖTZE**  
TECHNIC



**WHEEL HUBS**

**[klotzetechnik.de](http://klotzetechnik.de)**



KT No.	Replaces Ref. No:	Description	Model / Details
--------	-------------------	-------------	-----------------

**KT43998**

0403 - 0404 OTOBÜS DİSKLİ ÖN  
WHEEL HUB / FRONT (FOR BRAKE DISC)



OEM

3563340201 - 3563340001

Pos	A	B	C	D	E
F	110	150	22	176	380

**KT43999**

0403 - 0404 OTOBÜS DİSKLİ ÇEKİCİ  
WHEEL HUB / REAR (FOR BRAKE DISC)



OEM

3563560001

Pos	A	B	C	D	E
R	140	150	22	276	380

**NP-20111**

1840 - 1848 - 2528 - 3228 - 3240 AXOR/ACTROS E.M. ÖN DİSKLİ PORYA  
(2008 ÖNCESİ) WHEEL HUB OLD MODEL / FRONT (FOR BRAKE DISC)



OEM

9423341201 - 9423370701 - 9423340201 - 9423341501

Pos	A	B	C	D	E
F	130	150	22	176	382

**NP-20112**

1840 - 1848 - 2523 - 2528 - 3228 - 3240 AXOR DİSKLİ  
ÇEKİCİ PORYA WHEEL HUB / REAR (FOR BRAKE DISC)



OEM

9463560201 - 9463560901 - 9463561901 - 9603561801

Pos	A	B	C	D	E
R	157	170	22	297,5	377

**KT26334**

2528 - 3228 - 3240 AXOR DİNGİL PORYA  
REAR AXLE WHEEL HUB



OEM

3560101101 - 9463560101 - 9463561301

Pos	A	B	C	D	E
AXLE	130	150	22	187	380

**KT30842**

AXOR/ACTROS DİSKLİ ÖN FLANŞ (2008 SONRASI)  
FLANGE (FOR BRAKE DISC)



OEM

9433340945 - 9433341045 - 0003300725

Pos	A	B	C	D	E
F			22	38	382

**NP-20115**

AXOR-ACTROS DİSKLİ ÖN PORYA GÖBEĞİ  
(2008 SONRASI) HUB UNIT (FOR BRAKE DISC)



OEM

9433301125 - 9433340701 - 9433301225

Pos	A	B	C	D	E
F	140	140		142,5	199

**KT26367**

AXOR 4140 DİSKLİ ÖN PORYA GÖBEĞİ  
HUB UNIT (FOR BRAKE DISC)



OEM

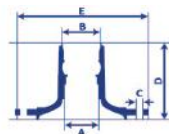
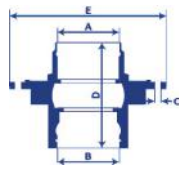
9433300825 - 9433340101

Pos	A	B	C	D	E
F	140	140		157,5	199





**KLÖTZE**  
TECHNIC



**MERCEDES**  
**MAN**



**KT No.** **Replaces Ref. No:** **Description** **Model / Details**

**KT44000**

AROCS TOP ÖN PORYA  
HUB UNIT



OEM

Pos	A	B	C	D	E
F					

**KT44001**

345 T - EURO 3 - OTOBÜS ÇEKİCİ PORYA  
WHEEL HUB / REAR



OEM

4472435160 - 0003560401

Pos	A	B	C	D	E
R	160	165	22,35	243	369

**NP-20130**

TRAVEGO DİSKLİ ÖN PORYA GÖBEĞİ  
(2008 SONRASI) HUB UNIT (FOR BRAKE DISC)



OEM

9433301125 - 9433340701

Pos	A	B	C	D	E
	140	140		142,5	199

**NP-20210**

TGA - TGS - TGX - MEGA FORTUNA DİSKLİ ÇEKİCİ  
PORYA WHEEL HUB / REAR (FOR BRAKE DISC)



OEM

81357010155 - 81357013155

Pos	A	B	C	D	E
R	160	160	22	163	380

WHEEL HUBS / PORYA





**KLÖTZE**  
TECHNIC

RENAULT



WHEEL HUBS / PORYA

KT No.

Replaces Ref. No:

Description

Model / Details

**KT44002**

RENAULT 270 ÇEKİCİ PORYA  
WHEEL HUB / REAR



OEM

5010439809

Pos	A	B	C	D	E
R	140	145	25	251	380

**NP-20431**

RENAULT PREMIUM DİSKLİ ÖN PORYA  
WHEEL HUB / FRONT (FOR BRAKE DISC)



OEM

7420535202 - 1026659 - 74851144470

Pos	A	B	C	D	E
F	125	125	25	165,5	383

**NP-20433**

RENAULT KERAX E.M. KAMPANALI ÇEKİCİ  
PORYA WHEEL HUB / REAR (FOR BRAKE DRUM)



OEM

5010566112 - 5010219270

Pos	A	B	C	D	E
R	150	160	25	235	376,5

**NP-20436**

RENAULT MAGNUM PREMIUM DİSKLİ ÇEKİCİ  
PORYA WHEEL HUB / REAR (FOR BRAKE DISC)



OEM

7420535263 - 7420819834 - 7485107753

Pos	A	B	C	D	E
R	148	148	25	270	383

**NP-20437**

RENAULT PREMIUM DİSKLİ ÖN PORYA  
WHEEL HUB / FRONT (FOR BRAKE DISC)



OEM

7421022433 - 7485111789

Pos	A	B	C	D	E
F	110	110	25	162,5	384

**KT44003**

RENAULT PREMIUM DİSKLİ ÖN PORYA  
WHEEL HUB / FRONT (FOR BRAKE DISC)



OEM

7421021381 - 7410241087

Pos	A	B	C	D	E
F	110	110	27,15	160	383,5

**NP-20442**

RENAULT PREMIUM KERAX KAMPANALI ÖN  
PORYA WHEEL HUB / FRONT (FOR BRAKE DRUM)



OEM

7421024160 - 1026665

Pos	A	B	C	D	E
F	125	125	25	164,5	384

**NP-20443**

RENAULT CERLİ KAMPANALI ÇEKİCİ PORYA  
WHEEL HUB / REAR (FOR BRAKE DRUM)



OEM

7421328181 - 7420820402

Pos	A	B	C	D	E
R	148	148	25,25	157	385,5

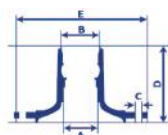
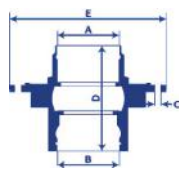


klotzetechnik.de

Oem numbers are only for comparison and must not be mentioned on invoices



**KLÖTZE**  
TECHNIC



**RENAULT - IVECO**



**KT No.** **Replaces Ref. No:** **Description** **Model / Details**

**KT44004**

RENAULT KERAX E.M. CERLİ KAMPANALI ÇEKİCİ PORYA WHEEL HUB / REAR (FOR BRAKE DRUM)



OEM

7420517167 - 1026661

Pos	A	B	C	D	E
R	148	148	27,15	157	385,5

**NP-20447**

RENAULT KERAX KAMPANALI ÇEKİCİ PORYA WHEEL HUB / REAR (FOR BRAKE DRUM)



OEM

7420819822 - 7420820420 - 1026757

Pos	A	B	C	D	E
R	148	148	25	197,5	383,5

**KT44005**

IVECO 50 NC Y.M. ÖN PORYA WHEEL HUB / FRONT (NEW MODEL)



OEM

4685285 - 7168364

Pos	A	B	C	D	E
F					

**KT44006**

IVECO 50 NC Y.M. / 8512 IVECO KAMPANALI ARKA PORYA WHEEL HUB / REAR



OEM

4686447 - 7168365

Pos	A	B	C	D	E
R					

**KT44007**

IVECO 85-12 DİSK ÖN PORYA WHEEL HUB / FRONT (FOR BRAKE DISC)



OEM

7166920

Pos	A	B	C	D	E
F					

**KT44008**

IVECO EUROBUS ÖN DİSK PORYA WHEEL HUB / FRONT (FOR BRAKE DISC)



OEM

7173750

Pos	A	B	C	D	E
F					

**NP-20505**

IVECO EUROBUS ARKA PORYA WHEEL HUB / REAR



OEM

7173696

Pos	A	B	C	D	E
R					

WHEEL HUBS / PORYA



KT No. Replaces Ref. No: Description Model / Details

**KT44009**

ISUZU NPR ÖN PORYA  
WHEEL HUB / FRONT



OEM

8942463081

Pos A B C D E  
F

**KT44010**

ISUZU NPR ARKA PORYA  
WHEEL HUB / REAR



OEM

3899906090

Pos A B C D E  
R

**KT44011**

ISUZU ŞAMPİYON ÖN PORYA  
CHAMPION WHEEL HUB / FRONT



OEM

3777727543

Pos A B C D E  
F

**KT44012**

ISUZU ŞAMPİYON ARKA PORYA  
CHAMPION WHEEL HUB / REAR



OEM

3777700050

Pos A B C D E  
R

**KT44012**

ISUZU NQR ÖN PORYA  
WHEEL HUB / FRONT



OEM

8971312360

Pos A B C D E  
F

**KT44013**

ISUZU NQR - NPR 75 - TURKUAZ ABS ARKA  
PORYA WHEEL HUB / REAR (ABS)



OEM

3777731710 - 3777707960 - 897250321101

Pos A B C D E  
R

**KT44014**

ISUZU NQR ABS ÖN PORYA  
WHEEL HUB / FRONT (ABS)



OEM

377773213101

Pos A B C D E  
F

**KT44015**

ISUZU NNR ÖN PORYA  
WHEEL HUB / FRONT

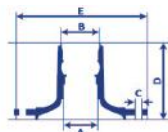
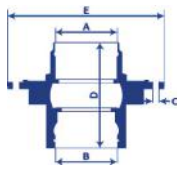


OEM

894365459001

Pos A B C D E  
F





KT No. Replaces Ref. No: Description Model / Details

**KT44016**

ISUZU NPR 75 ABS ARKA PORYA  
WHEEL HUB / REAR



OEM  
8973499110

Pos A B C D E  
R

**KT44017**

ISUZU NPR 66 OTOBÜS DAR BİLYA ARKA PORYA  
WHEEL HUB - SMALL BEARING



OEM

Pos A B C D E  
R

**KT44018**

ISUZU NPR 66 OTOBÜS GENİŞ BİLYA ARKA  
PORYA WHEEL HUB - BIG BEARING



OEM

Pos A B C D E  
R

**KT44019**

ISUZU NOVA ÖN PORYA  
WHEEL HUB / FRONT



OEM  
387017498001

Pos A B C D E  
F

**KT44020**

ISUZU NOVA ARKA PORYA  
WHEEL HUB / REAR



OEM  
387017947001

Pos A B C D E  
R

**KT44021**

ISUZU NQR 71-75 NPR ÖN EURO 5 DİSKLİ  
WHEEL HUB / FRONT

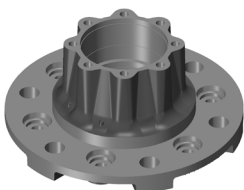


OEM  
8982992750

Pos A B C D E  
F

**KT44022**

ISUZU NQR 71-75 NPR ARKA EURO 5 DİSKLİ  
WHEEL HUB / REAR



OEM  
8981929240

Pos A B C D E  
R





KT No.	Replaces Ref. No:	Description	Model / Details
--------	-------------------	-------------	-----------------

**KT44023**SAF DİNGİL JANT TAŞIYICI FLANŞ  
FLANGE

OEM

1146200100 - 1146200401 - 1146200402

Pos	A	B	C	D	E
T			22	58	380

**KT44024**

12 TON ÇİFT TEKER PORYA



OEM

0327243200

Pos	A	B	C	D	E
T	150	120	22	206	380

**NP-21060**KOGEL KISA TİP PORYA DİSKLİ  
WHEEL HUB REAR AXLE - SHORT TYPE

OEM

0003500535 - 9463560401 - 9463560501 - 9463562601

Pos	A	B	C	D	E
T	140	140	22	169,5	380

**KT26324**KOGEL UZUN TİP PORYA DİSKLİ  
WHEEL HUB REAR AXLE - LONG TYPE

OEM

9423300425 - 9423300301 - 9423341401

Pos	A	B	C	D	E
T	120	150	22	203	382,2

**KT44025**FRUEHAUF ÇİFTTEKER PORYA E.M.  
WHEEL HUB FOR TWIN WHEEL (OLD MODEL)

OEM

AJB 0038001 - CF 1014228

Pos	A	B	C	D	E
T	152,4	152,4	25,5	230,5	375

**KT44026**PİLOT PORYA Y.M. 12 TON DİSKLİ  
WHEEL HUB 12 TONNES (FOR BRAKE DISC)

OEM

0127243280 - 0980107320 - 0327243280

Pos	A	B	C	D	E
T	120	150	22	193,5	380

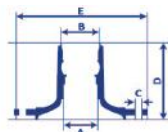
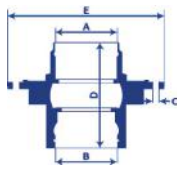
**KT44027**PORYA TRAILER BPW DİSKLİ 12 TONLUK  
WHEEL HUB KIT

OEM

980106580

Pos	A	B	C	D	E
T					





KT No. Replaces Ref. No: Description Model / Details

**KT44028**

SAF E.M. PİLOT PORYA DİSKLİ (82'LİK)  
WHEEL HUB (OLD MODEL FOR BRAKE DISC)



OEM

3307303000 - 3307303001

Pos	A	B	C	D	E
T	138	138	22	144	385,5

**KT44029**

SAF Y.M. PİLOT PORYA DİSKLİ (88'LİK) WHEEL  
HUB (NEW MODEL FOR BRAKE DISC)



OEM

3307304500

Pos	A	B	C	D	E
T	138	138	22	156	380

**KT44030**

SAF PİLOT DİSKLİ PORYA  
WHEEL HUB (FOR BRAKE DISC)



OEM

3307305600

Pos	A	B	C	D	E
T	138	138	22	170	380

**KT44031**

SAF KAMPANALI PİLOT PORYA



NEW PRODUCT

OEM

3307304300

Pos	A	B	C	D	E

**KT44032**

12 TON ÇİFT TEKER PORYA-TRAILER  
WHEEL HUB KIT



NEW PRODUCT

OEM

0980106040

Pos	A	B	C	D	E
T					

**NP-21110**

DAF XF-CF ÖN DİSKLİ PORYA (2006 ÖNCESİ)  
WHEEL HUB / FRONT (FOR BRAKE DISC)



OEM

1391615 - 1697346 - 1388905

Pos	A	B	C	D	E
F	119,7	124,7	25	134	386

**NP-21111**

DAF XF-CF DİSKLİ ÇEKİCİ PORYA (2006 ÖNCESİ)  
WHEEL HUB / REAR (FOR BRAKE DISC)



OEM

1391617 - 1818003 - 1389061 - 1388906

Pos	A	B	C	D	E
R	148	148	25	287	381

**NP-21114**

DAF XF-CF ÖN DİSKLİ PORYA (2006 VE  
SONRASI) WHEEL HUB (FOR BRAKE DISC)



OEM

1691621 - 1699327 - 1818004

Pos	A	B	C	D	E
F	125	125	25	139,5	387





KT No.	Replaces Ref. No:	Description	Model / Details
--------	-------------------	-------------	-----------------

**KT26534**

DAF XF-CF ÇEKİCİ DİSKLİ PORYA (2006 VE SONRASI) WHEEL HUB / REAR (FOR BRAKE DISC)



OEM

1657637 - 1812161

Pos	A	B	C	D	E
R	148	148	25	295	381

**NP-21118**

DAF XF-CF DİSKLİ ÖN PORYA (2010 VE SONRASI) WHEEL HUB / FRONT (FOR BRAKE DISC)



OEM

1812160 - 1613331 - 1428396

Pos	A	B	C	D	E
F	138	138	25	154	387

**NP-21375**

SCANIA DİSKLİ ÖN PORYA (R-G SERİSİ) WHEEL HUB / FRONT (FOR BRAKE DISC)



OEM

1868663 - 1480933 - 1724406 - 1864430

Pos	A	B	C	D	E
F	127,27	127	22,25	194	

**NP-21376**

SCANIA ŞANTIYE TİPİ DİSKLİ ÇEKİCİ PORYA (R-G SERİSİ) WHEEL HUB / REAR



OEM

1382884

Pos	A	B	C	D	E
R	147	147	22,3	210,5	380

**NP-21378**

SCANIA DİSKLİ ÇEKİCİ PORYA (R-G SERİSİ) WHEEL HUB / REAR



OEM

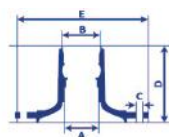
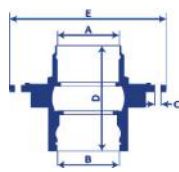
1724790 - 1800283

Pos	A	B	C	D	E
R	147	147	22,3	213,5	380





**KLÖTZE**  
TECHNIC



**VOLVO**



KT No. Replaces Ref. No: Description Model / Details

**NP-21411**

VOLVO FH-12 E.M. FREZELİ DİSKLİ ÖN PORYA (125 BİLYA 25 DELİK) WHEEL HUB / FRONT (FOR BRAKE DISC)



OEM

3988930 - 3989341 - 85107750 - 8511448 - 8514470 - 85111791 - 1026798

Pos	A	B	C	D	E
F	125	125	25	165,5	383

**KT26780**

VOLVO FH FREZELİ DİSKLİ ÖN PORYA WHEEL HUB / FRONT (FOR BRAKE DISC)



OEM

85111794 - 85105693 - 3988831 - 85101818 - 3092719 - 85114471

Pos	A	B	C	D	E
F	125	125	27,15	165,5	383

**NP-21416**

VOLVO FH - FM FREZELİ AKSLİ DİSKLİ ÇEKİCİ PORYA WHEEL HUB AXLE (FOR BRAKE DISC)



OEM

20535263 - 85107753 - 20567394

Pos	A	B	C	D	E
R	148	148	25,0	270	383,4

**NP-21417**

VOLVO FM - FH DİSKLİ FREZELİ ÖN PORYA WHEEL HUB (FOR BRAKE DISC)



OEM

21022433 - 85111789 - 85107749

Pos	A	B	C	D	E
F	110	110	25	160	383,5

**NP-21418**

VOLVO FH-FM FREZELİ AKSLİ DİSKLİ ÇEKİCİ PORYA WHEEL HUB / REAR (FOR BRAKE DISC)



OEM

3988833 - 85105696 - 20516966 - 20476383 - 85104298 - 3988834

Pos	A	B	C	D	E
R	148	148	27,15	270	383,4

**NP-21419**

VOLVO FREZELİ DİSKLİ ÖN PORYA WHEEL HUB (FOR BRAKE DISC)



OEM

85111792 - 85105692 - 3989919 - 3099341 - 20534900

Pos	A	B	C	D	E
F	110	110	27,15	160	383,5

**NP-21422**

VOLVO FH-16 KAMPANALI ÖN PORYA WHEEL HUB / FRONT (FOR BRAKE DISC)



OEM

21024160 - 21024166 - 20534905 - 20535904 - 20581399 - 21024164

Pos	A	B	C	D	E
F	125	125	25	164,5	384

**KT26800**

VOLVO F SERİSİ CERLİ KAMPANALI ÇEKİCİ PORYA WHEEL HUB / REAR (FOR BRAKE DISC)



OEM

20535207 - 20819804 - 1075408 - 20820402 - 1075428 - 1076526 - 21328181 - 21328177 - 20819806

Pos	A	B	C	D	E
R	148	148	25,25	157	385,5





KT No.

Replaces Ref. No:

Description

Model / Details

**KT26781**

VOLVO KAMPANALI ÖN PORYA  
WHEEL HUB/FRONT (FOR BRAKE DISC)



OEM

20518092 - 21024155 - 3988674

Pos	A	B	C	D	E
F	125	125	27,15	164,5	387

**NP-21425**

VOLVO F SERİSİ E.M. CERLİ KAMPANALI ÇEKİCİ  
PORYA WHEEL HUB/REAR (FOR BRAKE DISC)



OEM

20517164 - 85104301 - 1078053

Pos	A	B	C	D	E
R	148	148	27,15	157	385,5

**NP-21427**

VOLVO Y.M. KAMPANALI ÇEKİCİ PORYA  
WHEEL HUB/REAR (FOR BRAKE DISC) (NEW MODEL)



OEM

20499881 - 20820420

Pos	A	B	C	D	E
R	148	148	25	197,5	383,5

**KT44033**

VOLVO FM 9 ÇEKİCİ PORYA  
WHEEL HUB / REAR



OEM

Pos	A	B	C	D	E
R	148	148	27	191,2	383

**KT44001**

NEOPLAN OTOBÜS KAMPANALI FREZELİ ÇEKİCİ  
PORYA WHEEL HUB / REAR



OEM

4472435160 - 0003560401

Pos	A	B	C	D	E
R	160	165	22,35	243	369

**KT44034**

NEOPLAN OTOBÜS DİSKLİ FREZELİ ÇEKİCİ PO-  
RYA WHEEL HUB / REAR (FOR BRAKE DISC)



OEM

4472435370 - 4472433570

Pos	A	B	C	D	E
R	160	165	22,35	252	384

**KT26800**

FORD CARGO 3530 CERLİ KAMPANALI ÇEKİCİ  
PORYA WHEEL HUB / REAR (FOR BRAKE DISC)



OEM

20535207

Pos	A	B	C	D	E
R	148	148	25,25	157	385,5

**KT44035**

HYUNDAI HD65 ARKA PORYA  
WHEEL HUB / REAR

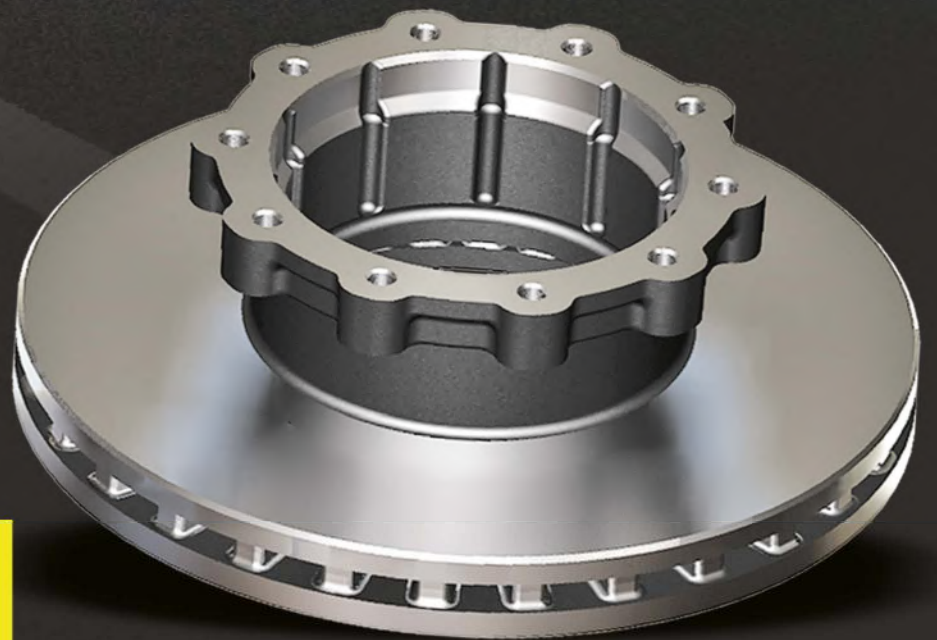


OEM

Pos	A	B	C	D	E
R					



Gesuchte Europäische  
Qualität



**KLÖTZE**  
TECHNIC

# BRAKE DISC

[klotzetechnik.de](http://klotzetechnik.de)



**KT No.** **Replaces Ref. No:** **Description** **Model / Details**

**KT15090** MERCEDES 0403-0404



**OEM**  
3564211012 - 3564210312 - 3564211212

Pos	A	B	H	C	I	N	Q
F-R	438	45	135	195	235	10	M14 1.5

**KT15094** MERCEDES ACTROS / AXOR



**OEM**  
9424212112 - 9424211212 - 9424210912 - 9424211012  
9424211112 - II34600 - II37638 - II376380061

Pos	A	B	H	C	I	N	Q
F-R	430	45	133	211	238	10	M14 1.5

**KT13592** MERCEDES 15.17 ATEGO ÖN (FRONT)



**OEM**  
9754210012 - 9754210112 - 9754210212 9754219112 -  
6754210112 - II30676

Pos	A	B	H	C	I	N	Q
F	377	45	134	105.5	138	14	15

**KT13598** MERCEDES 15.17 ATEGO ARKA (REAR)



**OEM**  
9754230612 - 9754230012 - 6754210312 - 6754230312  
9754210312 - 9754230312 - 9754290612 - II30677

Pos	A	B	H	C	I	N	Q
R	377	45	138	176	201	8	M14 1.5

**KT15089** MERCEDES 560



**OEM**  
2069432001 - 8285390000 - 501313313 - 204556 - 6274210012

Pos	A	B	H	C	I	N	Q
F	432	45	135	194	220	10	M16 1.5


**KT14743** MERCEDES NIEDERFLUR NF 3



**OEM**  
082135830 - 234110 - II37191 - II31025 - 0501315228

Pos	A	B	H	C	I	N	Q
F	430	45	131	203	235	10	M16 1.5

**KT13745** MERCEDES AXOR YENİ MODEL (NEW MODEL)



**OEM**  
9434210312 - 9434210412

Pos	A	B	H	C	I	N	Q
F	430	45	143	131	168	10 2	21 M12

**KT15088** MERCEDES KOLUMAN MIDILLI TRAILER



**OEM**  
6754210012

Pos	A	B	H	C	I	N	Q
T	377	45	131.5	210	239	10	M14 1.5

KT No. Replaces Ref. No: Description Model / Details

**KT15093**

MERCEDES MB 240



OEM

6884210212 - 6884210012

Pos	A	B	H	C	I	N	Q
F	312	34	82	118	140	6	M12 1.5

**KT14872**

MERCEDES MB 260



OEM

6704210312 - 6704210112 - 6703560312

Pos	A	B	H	C	I	N	Q
F	324	30	91	118	140	6	M12 1.5

**KT15092**

 MERCEDES MB 260  
 (ABS)


OEM

6884230212 - 6884230012

Pos	A	B	H	C	I	N	Q
R	312	34	115.5	157	192	6	M12 1.5

WITH ABS

**KT13596**

 MERCEDES ATEGO 10 DELİK  
 (HOLES)


OEM

9704210112 - 9704210012 - 9704210612

Pos	A	B	H	C	I	N	Q
F	335	34	102.5	92	120	10	14.5

**KT16247**

 MERCEDES ATEGO 8 DELİK / HOLES  
 (EUROPE)


OEM

9704230212 - 81508030039

Pos	A	B	H	C	I	N	Q
R	330	34	130	145	177	8	M12 1.5

**KT13601**

MERCEDES ATEGO 712-823



OEM

9704230412 - 9704230612

Pos	A	B	H	C	I	N	Q
R	335	34	111	145	177	8	M12 1.5

**KT15254**

MERCEDES AROCS ÖN FREN DİSKİ



OEM

9604210312 - 9604210412 - 9604210512

Pos	A	B	H	C	I	N	Q
F	430	45	131	131	168	10 2	M12 1.5

**KT15090**

MERCEDES AROCS ARKA FREN DİSKİ



OEM

3564211212 - 9424211012

Pos	A	B	C	D	E
R					



KT No.	Replaces Ref. No:	Description	Model / Details
--------	-------------------	-------------	-----------------

**KT17856**

MAN 19.463 SG 90 F 2000 10 DELİK (HOLES)


**OEM**

81508030009 - 81508030014 - 81508030001 81508030015 - II39289F

Pos	A	B	H	C	I	N	Q
F	438	45	135	200	235	10	M16 1.5

**KT13593**

MAN 19.463 SG 90 F 2000 12 DELİK (HOLES)


**OEM**

81508030023 - 81508030038 - 81508030031

Pos	A	B	H	C	I	N	Q
F	432	45	130	131	168	12 3	19 M12

**KT13593**

MAN T.G.A 18.410/460 ÖN (FRONT)


**OEM**

81508030040 - 81508030046

Pos	A	B	H	C	I	N	Q
F	432	45	130	131	168	12 3	19 M12

**KT13599**

MAN T.G.A 18.410/460 ARKA (REAR)


**OEM**

81508030041 - 81508030021 - 81508030047

Pos	A	B	H	C	I	N	Q
R	432	45	135	208	235	10	M16 1.5

**KT13589**

MAN 12.153 ÖN (FRONT)


**OEM**

81508030026 - 81508030024

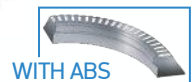
Pos	A	B	H	C	I	N	Q
F	330	34	104	135	158	10	M14 1.5

**KT13588**

MAN 12.163 ARKA (REAR) ABS


**OEM**

81508030022 - 81508030061



Pos	A	B	H	C	I	N	Q
R	330	34	124	157	180	12	M12 1.5

**KT16258**

MAN T.G.L 12.180 ÖN (FRONT)


**OEM**

81508030042 - 81508030053

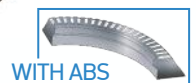
Pos	A	B	H	C	I	N	Q
F	335	34	93	90	122	10 2	15 M10x1.5

**KT16257**

MAN T.G.L 12.180 ARKA (REAR) ABS


**OEM**

81508030063 - 81508030062 - 8150800054



Pos	A	B	H	C	I	N	Q
R	335	34	118	154	176	10 2	M14 M8

KT No. Replaces Ref. No: Description Model / Details

**KT13587**

RENAULT MAGNUM PREMIUM AE-385


**OEM**  
 5010216437

Pos	A	B	H	C	I	N	Q
F	438	45	97	131	165	10 2	17 M14

**KT16249**

RENAULT 400 - 420


**OEM**  
 5010422593 - 504134958 - 5010422363 - 5006172150

Pos	A	B	H	C	I	N	Q
F	434	45	97	131	165	10 2	17 M14

**KT16272**

RENAULT 420


**OEM**  
 5010525326

Pos	A	B	H	C	I	N	Q
R	435	45	163	260	335	10	32.75

**KT16239**

RENAULT 210 MIGNUM


**OEM**  
 5010260218

Pos	A	B	H	C	I	N	Q
F	380	45	85	117	144	10 2	15 M14x2

**KT16253**

RENAULT 220


**OEM**  
 5010525014

Pos	A	B	H	C	I	N	Q
F	376	45	99	117	144	10 2	15 M14

**KT16849**

 RENAULT 220 / 10 DELİK  
 (HOLES)

**OEM**  
 5010525364 - 5010598307

Pos	A	B	H	C	I	N	Q
R	377	45	168	262	335	10	33

**KT16134**

RENAULT 440 - 460


**OEM**  
 5001864498

Pos	A	B	H	C	I	N	Q
F-R	434	45	45	220			

**KT16138**

 RENAULT 220 8 DELİK  
 (HOLES)

**OEM**  
 5010525362 - 5010525015

Pos	A	B	H	C	I	N	Q
R	377	45	166	222	275	8	22

KT No. Replaces Ref. No. Description Model / Details

**KT16251** RENAULT 150 MIDLUM



OEM  
5010422262 - 5010525308 - 5010598303

Pos	A	B	H	C	I	N	Q
F	330	34	80	95	118	10 2	15 M12

**KT16250** RENAULT 460-480



OEM  
5010422364

Pos	A	B	H	C	I	N	Q
R	435	45	160	224.1	256	12	M14

**KT16144** RENAULT 280 YENİ MODEL (NEW MODEL)



OEM  
5010598308 - 20931249 - 20700508

Pos	A	B	H	C	I	N	Q
F	410	45	93	131	165	10 2	17 M14


**KT16851** RENAULT 280 ARKA (REAR)



OEM  
5010598309 - 20763234

Pos	A	B	H	C	I	N	Q
R	410	45	181.75	262	335	10	32.75


**KT16853** RENAULT 220 ÖN YENİ MODEL (FRONT / NEW MODEL)



OEM  
5010598305

Pos	A	B	H	C	I	N	Q
F	375	45	119	111	142	10 2	15 M12

**KT16135** RENAULT 220 ARKA YENİ MODEL (REAR / NEW MODEL)



OEM  
5001867798

Pos	A	B	H	C	I	N	Q
R	410	45	45	220			

KT No. Replaces Ref. No: Description Model / Details

**KT16255**

IVECO 85-12/120-14


**OEM**

07171274 - 01904532 - 7168368 - 42830

Pos	A	B	H	C	I	N	Q
F	315	26	118.5	160	205	6 2	18 M10

**KT16223**

 IVECO EUROBUS ÖN  
 (FRONT)

**OEM**

7182772-Y - 1908578

Pos	A	B	H	C	I	N	Q
F	322	30	134	215	275	8 2	20 M10

**KT16223**

 IVECO EUROBUS ARKA  
 (REAR)

**OEM**

7182770-Y - 1908578

Pos	A	B	H	C	I	N	Q
R	322	30	134	215	275	8 2	20 M10

**KT16224**

IVECO EUROTECH


**OEM**

 01907631 - 01908729 - 1908614 - 2991979  
 7173317 - 7180111 - 4856912

Pos	A	B	H	C	I	N	Q
F	430	50	102	170	195	12	M16 2

**KT14750**

IVECO EUROSTAR


**OEM**

 01906461 - 01906438 - 2992470 - 2992477 - 2996327  
 2996329 - 2996378 - 7179778 - 7182305 - 7184136 - II37654

Pos	A	B	H	C	I	N	Q
F	436	45	138	210	240	12	M16 2

**KT17120**

IVECO EUROCARGO 220E21


**OEM**

2995894 - 2995702 - 7187541

Pos	A	B	H	C	I	N	Q
F	377	45	107	113	144	14	15

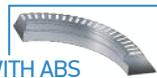
**KT17119**

 IVECO EUROCARGO 220E21 BİJONLU  
 (WITH BOLT)

**OEM**

2992636 - 7184078

WITH ABS



Pos	A	B	H	C	I	N	Q
R	377	45	151	225	275	8 2	22 M10

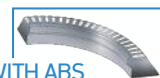
**KT16265**

 IVECO STRALIS  
 (ABS)

**OEM**

2995812 - 2996328 - 7189476 - 7185503


WITH ABS



Pos	A	B	H	C	I	N	Q
R	432	45	154	210	240	12	M16 2

KT No. Replaces Ref. No: Description Model / Details


**KT44036** IVECO EUROBUS ÖN SOĞUTMASIZ (FRONT / SOLID)



OEM  
75644 - 76267

Pos	A	B	H	C	I	N	Q
F	322	30	134	215	275	8 2	20 M10


**KT44037** IVECO EUROBUS ARKA SOĞUTMASIZ (REAR / SOLID)



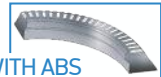
OEM  
75644 - 76266

Pos	A	B	H	C	I	N	Q
R	322	30	134	215	275	8 2	20 M10

**KT14746** IVECO 120E21 EUROCARGO (ABS)



OEM  
01906466 - 7183632

WITH ABS 

Pos	A	B	H	C	I	N	Q
R	330	34	141	215	275	8 2	20 M10


**KT44038** IVECO 85E13 EUROCARGO



OEM  
60260 - 77794

Pos	A	B	H	C	I	N	Q
F	322	30	134	160	205	6 2	18 M10

**KT44039** IVECO 85E13 EUROCARGO SOĞUTMASIZ (SOLID)



OEM  
76258

Pos	A	B	H	C	I	N	Q
F	322	30	134	160	205	6 2	18 M10


**KT44040** IVECO 85E13 EUROCARGO



OEM  
74305

Pos	A	B	H	C	I	N	Q
R	322	30	134	160	205	6 2	18 M10

**KT44041** IVECO 85E13 EUROCARGO ARKA SOĞUTMASIZ (REAR / SOLID)



OEM  
66643

Pos	A	B	H	C	I	N	Q
R	322	30	134	160	205	6 2	18 M10

**KT17122** IVECO EUROCARGO 100E 18



OEM  
7189265 - 7189456 - 2996418 - 2996419

Pos	A	B	H	C	I	N	Q
R	330	32	130	185	245	6 2	20 M10

KT No. Replaces Ref. No: Description Model / Details

**KT17123**

IVECO EUROCARGO 100E 18 (ABS) ARKA


 OEM  
 7189456


Pos	A	B	H	C	I	N	Q
F	290	22	110.5	125	170	6 6	M18 13

**KT14830**

IVECO DAILY 35-C-15 (ABS)


 OEM  
 42546401 - 504079365 - 504080994

Pos	A	B	H	C	I	N	Q
F	290	22	110.5	125	170	6 6	M18 13

**KT14778**

IVECO DAILY ÖN (FRONT)


 OEM  
 42470842 - 1908772 - 93821918

Pos	A	B	H	C	I	N	Q
F	290	22	111	125	170	6 6	M18 13

**KT14778**

IVECO DAILY ARKA (REAR)


 OEM  
 42471111 - 1908773 - 1908793 - 7180256

Pos	A	B	H	C	I	N	Q
R	289	22	85	84	108	8	10.5

**KT14838**

IVECO DAILY 65-C-15 ÖN (FRONT)


 OEM  
 42471214

Pos	A	B	H	C	I	N	Q
F	290	26	53	80	110	9	12.5

**KT44042**

IVECO DAILY 65-C-15 ARKA (REAR)


 OEM  
 7182874 - 42471150

Pos	A	B	H	C	I	N	Q
R	306	22	137	178	215	6	M10 1.25

**KT14831**

IVECO DAILY 35-C -15 ÖN Y.M. (FRONT / NEW MODEL)


 OEM  
 2996121

Pos	A	B	H	C	I	N	Q
F	290	28	46	74	95	9	12.5

**KT14836**

IVECO DAILY 35-C -15 ARKA Y.M. (REAR / NEW MODEL)


 OEM  
 2996043


Pos	A	B	H	C	I	N	Q
R	294	24	87.5	84	108	8	10.5



**KT No.** **Replaces Ref. No:** **Description** **Model / Details**

**KT14835**

IVECO DAILY 70-C-15 ÖN.Y.M.  
(FRONT / NEW MODEL)



OEM

504121723 - 2996122

Pos	A	B	H	C	I	N	Q
F	301	30	59	83	111	9	14.5

**KT17118**

IVECO DAILY 70-C-15 ARKA  
(REAR)



OEM

7186848 - 2996049

Pos	A	B	H	C	I	N	Q
R	306	28	132	178	216	6	M10 1.5

**KT44043**

MAGIRUS YENİ MODEL  
(NEW MODEL)



OEM

12E0008248

Pos	A	B	H	C	I	N	Q
F	290	25	160	120	205	6 6	M18 13

**KT44044**

OTOKAR SULTAN ÖN  
(FRONT)



OEM

13C2505572BA

Pos	A	B	H	C	I	N	Q
F	330	34	80	95	118	10 2	15 M12

**KT44045**

OTOKAR SULTAN ARKA  
(REAR) ABS



OEM

13C3508390BA



Pos	A	B	H	C	I	N	Q
R	330	34	119	150	175	12	M12

**KT44046**

OTOKAR DORUK OTOBÜS ÖN (FRONT)



OEM

16H00 05 464AA

Pos	A	B	H	C	I	N	Q
F	377	45	130	105	144	10 1	14,5 M12

**KT44047**

OTOKAR DORUK OTOBÜS ARKA  
(REAR) ABS



OEM

16F00 05 248AA



Pos	A	B	H	C	I	N	Q
R	377	45	138.5	169	196	8	M14 1.5

**KT44048**

SULTAN (EURO 4) Y.M. ÖN  
(NEW MODEL / FRONT)



OEM

13C33-0557 -- AA

Pos	A	B	H	C	I	N	Q
F	335	34	102.5	92	120	10	14.5



KT No. Replaces Ref. No: Description Model / Details

**KT44049**

OTOKAR KENT



OEM

16N00 - 05248 - BA / 0501316953

Pos	A	B	H	C	I	N	Q
F	430	45	131	203	235	10	M16 1.5

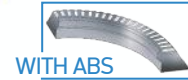
**KT44050**

KARSAN ATAK (ABS) ARKA FREN DISK



OEM

52098666 - 3010067AB



Pos	A	B	H	C	I	N	Q
R							

**KT44051**

ISUZU CITIBUS



OEM

377777391054

Pos	A	B	H	C	I	N	Q
F	330	34	102.5	91.70	122	10 2	15 M10

**KT44052**

ISUZU TORA ÖN FREN DİSKİ



OEM

3870262970

Pos	A	B	H	C	I	N	Q
F	377	45	130	105	144	10 1	14.5 M12

**KT44053**

ISUZU - CITIMARK



OEM



Pos	A	B	H	C	I	N	Q
R	375	45	139	169	196	8	M14 1.5

**KT44054**

ISUZU - NOVO LUX ABS



OEM

3870143170



Pos	A	B	H	C	I	N	Q
R	330	34	119	150	175	12	M12

**KT44055**

ISUZU NPR 75 EURO 5 ÖN



OEM

8982488951

Pos	A	B	C	D	E
F					

**KT44056**

 ISUZU NQR 71-75 NPR 75 NNLR EURO 5-6  
 ARKA FREN DİSKİ


OEM

8981919560

Pos	A	B	C	D	E
R					





KT No. Replaces Ref. No. Description Model / Details

**KT44057**

ISUZU 25 NOVO CITILIFE FREN DİSKİ



OEM  
387.061.2600.51

Pos	A	B	C	D	E
R					

**KT44058**

ISUZU CITY BUS LE 60 (ABS) ARKA FREN DİSKİ



OEM  
3870226970AA



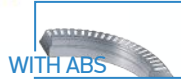
Pos	A	B	C	D	E
R					

**KT44059**

ISUZU CITIBUS 9.5 MM (ABS) ARKA FREN DİSKİ



OEM  
387029330001 - 387022697051



Pos	A	B	C	D	E
R					

**KT44060**

MITSUBISHI EURO 5 ÖN  
(FRONT)



OEM  
MK584503Y

Pos	A	B	H	C	I	N	Q
F	310	40	53,5	114	140	6	M 12 1,75

**KT44061**

MITSUBISHI EURO 5 ARKA  
(REAR)



OEM  
MK584504Y

Pos	A	B	H	C	I	N	Q
R	310	40	70	139	160	12	10

**KT44062**

MITSUBISHI EURO 6 FREN DİSKİ ÖN



OEM  
MK584501AB

Pos	A	B	C	D	E
F					

**KT44063**

MITSUBISHI EURO 6 FREN DİSKİ ARKA



OEM  
MK584500AB

Pos	A	B	C	D	E
R					

**KT44064**

MITSUBISHI METROPOL



OEM  
16F00-05-248AA

Pos	A	B	H	C	I	N	Q
R	377	45	138.5	169	196	8	M14 1.5

KT No. Replaces Ref. No: Description Model / Details

**KT16242**

BPW FRUEHAUF



OEM

0308835030 - 0308835037

Pos	A	B	H	C	I	N	Q
T	430	45	160	290	335	10	23

**KT16243**

 BPW KÜÇÜK DAR BOĞAZ 020  
 (NARROW THROTTLE)


OEM

 0308834020 - 0308834060 - 0308834067  
 103784 - 104085

Pos	A	B	H	C	I	N	Q
T	377	45	160	290	335	10	23

**KT16261**

 BPW KÜÇÜK GENİŞ BOĞAZ 040  
 (WIDE THROTTLE)


OEM

0308834080 - 0308834087

Pos	A	B	H	C	I	N	Q
T	377	45	170	290	335	10	23

**KT16260**

 BPW GENİŞ BOĞAZ 160° LİK 298  
 (WIDE THROTTLE)


OEM

0308834040 - 0308834047 - 0300224093

Pos	A	B	H	C	I	N	Q
T	377	45	160	298	335	10	22.5

**KT17854**

 BPW KÜÇÜK 8 DELİK  
 (HOLES)


OEM

0308834010 - 0308834017 - 0308834030

Pos	A	B	H	C	I	N	Q
T	377	45	160	230	275	8	23

**KT15949**

SAF TRAILER



OEM

4079000500 - 4079000501 - 4079000502

Pos	A	B	H	C	I	N	Q
T	430	45	130	131	168	12 3	19 M12

**KT16241**

 SAF KÜÇÜK 8 DELİK  
 (HOLES)


OEM

4079000400

Pos	A	B	H	C	I	N	Q
T	377	45	158	244	275	8	22.5

**KT44065**

SAF KÜÇÜK GÖBEKSİZ - TRAILER



OEM

4079001001 - 4079001000 - 4079001002

Pos	A	B	H	C	I	N	Q
T	376	45	58	170.5	190	10	13.5



KT No.

Replaces Ref. No:

Description

Model / Details

**KT16273**

SAF BÜYÜK GÖBEKSİZ - TRAILER



OEM

4079001300 - 4079001301 - 407901300

Pos	A	B	H	C	I	N	Q
T	430	45	48	170.5	190	10	13.5

**KT17613**

FRUEHAUF 170 Y.M. UZUN SCHMITZ  
(NEW MODEL / LONG TYPE)



OEM

17870

Pos	A	B	H	C	I	N	Q
T	430	45	168.5	290	335	10	22

**KT44066**

FRUEHAUF  
(ABS) HALDEX



OEM

13162025 - 103696449445 - CF103696  
M069018 - M200135 - MBR9007 - M069018



Pos	A	B	H	C	I	N	Q
T	430	45	155	280	335	10	26

**KT16242**

BPW BÜYÜK 298 GÖBEK 050  
BIG 298 HUB



OEM

0308835050 - 0308835057 - 0308835010

Pos	A	B	H	C	I	N	Q
T	430	45	160	298	335	10	22.5

**KT16248**

SAF KÜÇÜK 12 DELİK  
(HOLES)



OEM

4079000700 - 4079000701

Pos	A	B	H	C	I	N	Q
T	375	45	140	131	168	12 3	19 M12

**KT16846**

SAF B9 22



OEM

4079001700 - 4079001701

Pos	A	B	H	C	I	N	Q
T	430	45	131.5	189.25	215	10	M14 1.5

**KT44067**

SAF KÜÇÜK B9



OEM

4079001800 - 4079001801

Pos	A	B	H	C	I	N	Q
T	376	45	140	189.25	215	10	M14 1.5

**KT44068**

GIGANT TRAILER



OEM

9267086

Pos	A	B	H	C	I	N	Q
T	430	45	155	280	335	10	26.5





KT No. Replaces Ref. No: Description Model / Details

**KT44069**

VALX



OEM

6622256114

Pos	A	B	H	C	I	N	Q
T	430	45	187,5	298	335	10	23

**KT44070**

FRUEHAUF SCHMITZ CARGOBULL FREN DISKI



OEM

1088133

Pos	A	B	H	C	I	N	Q
T							

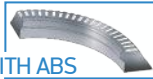
**KT13966**

 ROR Y.M. TRAILER  
 (NEW MODEL) ABS


OEM

 21225115 - 3218G1333 - MBR9018  
 21227349 - 31788700100

WITH ABS



Pos	A	B	H	C	I	N	Q
T	378	45	150	222	250	10	M16





KT No. Replaces Ref. No: Description Model / Details

**KT15903**

DAF CF 85 X F95



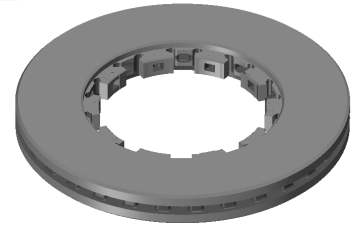
OEM

1387439 - 1640561 - 1726138 - II39112F - II39541F  
II39112F - IL39541F - K004322 - Z0009911

Pos	A	B	H	C	I	N	Q
F-R	432	45	45	217			

**KT15903**

DAF CF85 X95 YENİ MODEL ÖN-ARKA



OEM

1387439

Pos	A	B	H	C	I	N	Q
F	460	48	119	170	195	10	M16 2

**KT15904**

DAF LFC FREN DISKİ



OEM

140 02 73 - 140 82 54 - 140 86 72

Pos	A	B	H	C	I	N	Q
R	330	34	119	150	175	12	M12

**KT16253**

DAF LF55 ÖN



OEM

1400069-13162045-MBR5104

Pos	A	B	H	C	I	N	Q
R	410	45	45	220			

**KT15089**

SETRA 317-417 Y.M.  
(NEW MODEL)



OEM

2069432001 - 8285390000 - 501313313 - 204556

Pos	A	B	H	C	I	N	Q
F	432	45	135	194	220	10	M16 1.5

**KT44071**

SETRA ÇİFT KATLI UZUN BOĞAZ  
(DOUBLE DECKER)



OEM

1792411111310 - 8285000235 - 179241111131 -  
179241111131B

Pos	A	B	H	C	I	N	Q
F	406	48	173	194	215	10	M16 1.5

**KT13591**

SCANIA 420



OEM

1386686 - 1402272 - 1852817 - K000510 - K000810

Pos	A	B	H	C	I	N	Q
F-R	430	45	131	208	237	10	M16 1.5

**KT14743**

SCANIA BUS



OEM

1415147

Pos	A	B	H	C	I	N	Q
F	430	45	131	203	235	10	M16 1.5



KT No. Replaces Ref. No: Description Model / Details

**KT16134**

VOLVO FH12



OEM

85103803 - 20515093

Pos	A	B	H	C	I	N	Q
F-R	434	45	45	220			

**KT16080**

 VOLVO F-H 12 SOĞUTMASIZ  
 (SOLID)


OEM

8551042 - 3092710

Pos	A	B	H	C	I	N	Q
F-R	434	45	45	220			

**KT16135**

 VOLVO EURO 5 KÜÇÜK  
 (SMALL)


OEM

85103804 - 85110495

Pos	A	B	H	C	I	N	Q
R	410	45	45	220			

**KT16081**

 VOLVO EURO 5 SOĞUTMASIZ  
 (SOLID)


OEM

85103806

Pos	A	B	H	C	I	N	Q
F-R	410	45	45	220			

**KT14743**

NEOPLAN SKYLINGER



OEM

 082135830 - 234110 - II37191 - II31025 - 0501315228 - 501316953  
 16N00-05239 AA

Pos	A	B	H	C	I	N	Q
F	430	45	131	203	235	10	M16 1.5



KT No. Replaces Ref. No. Description Model / Details

**KT44072**

BMC PRO 518


 OEM  
 57RS300820

Pos	A	B	H	C	I	N	Q
F	330	34	124	157	180	12	M12 1.5

**KT44073**

BMC LEVEND XL


 OEM  
 57RS304999

Pos	A	B	H	C	I	N	Q
F	316	24	53.2	108	133	6 3	12.1 M5

**KT44074**

 BMC 3000 NISSAN  
 (ABS)

 OEM  
 57RS302289

Pos	A	B	H	C	I	N	Q
F	301	24	85.6	53	114	6 3	12.5 M5

**KT44075**

BMC PRO 180


 OEM  
 57RS305716

Pos	A	B	H	C	I	N	Q
F	377	45	129	169	196	8	M14 1.5

WITH ABS

**KT44076**

 BMC BELDE OTOBÜS ÖN  
 (FRONT)

 OEM  
 57RS307931

Pos	A	B	H	C	I	N	Q
F	430	45	138	197	240	16	M12

**KT44077**

 BMC BELDE OTOBÜS ARKA  
 (REAR) ABS

 OEM  
 57RS305298

Pos	A	B	H	C	I	N	Q
R	430	45	138	197	240	16	M12

WITH ABS

**KT44078**

FORD CARGO 1846


 OEM  
 DC462A315AA

Pos	A	B	H	C	I	N	Q
F-R	434	45	130	203.5	237	10	M16 1.5

**KT44078**

FORD CARGO 1846 ABS'Lİ

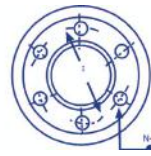
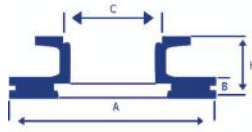

 OEM  
 DC462A315AA

Pos	A	B	H	C	I	N	Q
F-R	434	45	130	203.5	237	10	M16 1.5

WITH ABS



**KLÖTZE**  
TECHNIC



HINO  
VOLVO  
DAF



KT No.

Replaces Ref. No:

Description

Model / Details

**KT44079**

HINO 300 ÖN FREN DISKİ

NEW PRODUCT

OEM

43512.37120

Pos A B H C I N Q

**KT44080**

HINO 300 ARKA FREN DISKİ

NEW PRODUCT

OEM

42431-37040

Pos A B H C I N Q

**KT44081**

DAF DİSK ŞİMİ DOLU TİP

NEW PRODUCT



OEM

Pos A B H C I N Q

**KT44082**

BRAKE DISC LOCKING PLATE AND LEAF SPRING SET / ŞİM TAKIMI



OEM

1690788 - 1691889 - 1393561 - 1393560 - 1693978

**KT16134**

BRAKE DISC SPRING RING AND SCREWS SET /  
DİSK TAMİR TAKIMI (VOLVO)



OEM

3092224







**KLÖTZE**  
TECHNIC

Gesuchte Europäische  
**Qualität**

**klotzetechnik.de**



**KLÖTZE**  
TECHNIC

Gesuchte Europäische  
**Qualität**



[klotzetechnik.de](http://klotzetechnik.de)

**FLYWHEEL**



**KT No.** *Replaces Ref. No:* *Description* *Model / Details*

**KT44083**

MERCEDES 355 (380MM)



**OEM**

3550301305 - 3550300905

Pos A B H C I N Q

**KT01859**

MERCEDES 355 TURBO (420MM)



**OEM**

3450300205

Pos A B H C I N Q

**KT01877**

MERCEDES EURO2 (420MM) 6 YARGI (SPLINED)



**OEM**

4470301805 - 4470300705

Pos A B H C I N Q

**KT44084**

MERCEDES (420MM)



**OEM**

4030301405 - 4030301105

Pos A B H C I N Q

**KT01878**

MERCEDES (430MM)



**OEM**

4420300205

Pos A B H C I N Q

**KT02023**

MERCEDES AXOR Y.M.(395MM) 37 SENSOR (NEW MODEL)



**OEM**

9060301905

Pos A B H C I N Q

**KT01955**

MERCEDES AXOR (430MM) 37 YARGI (SPLINED)



**OEM**

4570300605

Pos A B H C I N Q

**KT02024**

MERCEDES ATEGO 37 SENSOR



**OEM**

9060303205 - 9060303805

Pos A B H C I N Q



KT No.	Replaces Ref. No:	Description	Model / Details
--------	-------------------	-------------	-----------------

**KT01222**

MERCEDES EURO 2 (430MM) 6 YARGI (SPLINED)


**OEM**

4420301905 - 4420300505

Pos A B H C I N Q

**KT01958**

MERCEDES ACTROS (430 MM) 37 YARGI (SPLINED)


**OEM**

5410300105 - 5420300205

Pos A B H C I N Q

**KT01876**

MERCEDES (380 MM)


**OEM**

4030301305 - 4030301605

Pos A B H C I N Q

**KT02022**

MERCEDES 906 AXOR - ATEGO


**OEM**

9060303005 - 9060303705

Pos A B H C I N Q



KT No.	Replaces Ref. No:	Description	Model / Details
--------	-------------------	-------------	-----------------

**KT02266**

MAN (420MM)



OEM

51023017300 - 51023017293

Pos A B H C I N Q

**KT01220**

MAN (430MM)



OEM

51023017414

Pos A B H C I N Q

**KT02915**

MAN EURO2 (430MM) 5 YARGI (SPLINED)



51023017439

Pos A B H C I N Q

**KT01220**

MAN EURO2 (430MM) 6 YARGI (SPLINED)



OEM

51023017440 - 51023016033

Pos A B H C I N Q

**KT04398**

MAN TGA 19.430 EURO3 (430MM) 58 SENSOR



OEM

51023015259 - 51023015210

Pos A B H C I N Q

**KT04394**

MAN 26.230-270 (395MM)



OEM

51023010086 - 51023017389

Pos A B H C I N Q

**KT04416**

MAN 12.153-163 (330MM)



OEM

51023015109 - 51023010469

Pos A B H C I N Q

**KT44085**

MAN 12.153 (330MM) 4 YARGILI (SPLINED)



OEM

51023015184

Pos A B H C I N Q



KT No.	Replaces Ref. No:	Description	Model / Details
--------	-------------------	-------------	-----------------

**KT04397**

MAN TGA (430 MM) 58 SENSOR


**OEM**

51023015209 - 51023015258

Pos A B H C I N Q

**KT04398**

MAN TGA - TGS - TGX (430 MM) 58 SENSOR


**OEM**

51023015210

Pos A B H C I N Q

**KT04398**

MAN TGA - TGS - TGX (430 MM) 58 SENSOR


**OEM**

51023015259 - 51023015210

Pos A B H C I N Q

**KT04414**

MAN 32.270 (395 MM) 6 YARGI (SPLINED)


**OEM**

51023015121

Pos A B H C I N Q

**KT44086**

MAN 32.242-32.302 (400MM)


**OEM**

51023017410 - 51023015045

Pos A B H C I N Q



KT No.	Replaces Ref. No:	Description	Model / Details
--------	-------------------	-------------	-----------------

**KT03283**

RENAULT PREMIUM 400



OEM

5000686610

Pos A B H C I N Q

**KT03284**

RENAULT 420



OEM

5010550772

Pos A B H C I N Q

**KT03285**

RENAULT 440



OEM

7420895903

Pos A B H C I N Q

**KT03291**

RENAULT 270



OEM

5010450325

Pos A B H C I N Q

**KT44087**

RENAULT 280



OEM

Pos A B H C I N Q



KT No.	Replaces Ref. No:	Description	Model / Details
--------	-------------------	-------------	-----------------

**KT03873**

IVECO STRALIS (430 MM)


**OEM**  
 5801555078

Pos A B H C I N Q

**KT44088**

IVECO (420 MM)


**OEM**  
 4840992 - 4852529

Pos A B H C I N Q

**KT03872**

IVECO TRAKKER - TECH (430 MM)


**OEM**  
 98426708

Pos A B H C I N Q

**KT44089**

IVECO (420 MM)


**OEM**  
 4699030

Pos A B H C I N Q

**KT44090**

 IVECO 50 NC Y.M. 65/9 - 35/9  
 (NEW MODEL)

**OEM**  
 4797424

Pos A B H C I N Q

**KT44091**

IVECO 85/12 - 120/14


**OEM**  
 4846996

Pos A B H C I N Q

**KT44092**

IVECO 85/12


**OEM**  
 4819281

Pos A B H C I N Q

**KT33570**

IVECO PYTO (430 MM)


**OEM**  
 8850750

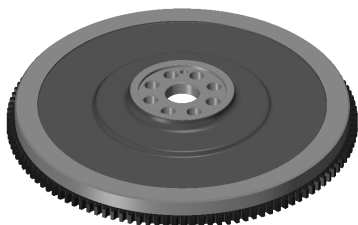
Pos A B H C I N Q





KT No.	Replaces Ref. No:	Description	Model / Details
--------	-------------------	-------------	-----------------

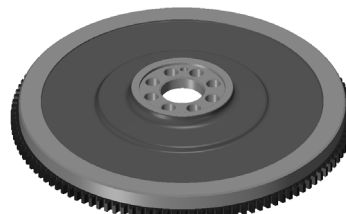
**KT44093**

 ISUZU ŞAMPİYON E.M.  
 (CHAMPION / OLD MODEL)

**OEM**

897330893001

Pos A B H C I N Q

**KT44093**

 ISUZU ŞAMPİYON Y.M.  
 (CHAMPION / NEW MODEL)

**OEM**

8973308930

Pos A B H C I N Q

**KT44094**

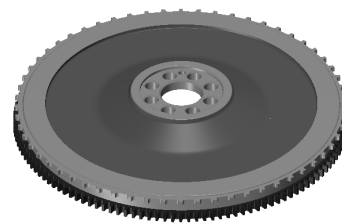
ISUZU NQR


**OEM**

897166516

Pos A B H C I N Q

**KT44095**

 ISUZU NQR YENİ MODEL  
 (NEW MODEL)

**OEM**

8973262272

Pos A B H C I N Q

**KT44096**

ISUZU-CITYBUS


**OEM**

898056355251

Pos A B H C I N Q

**KT44097**

ISUZU NLR


**OEM**

898012825151

Pos A B H C I N Q

**KT44098**

MITSUBISHI-659


**OEM**

ME240067 - ME012549

Pos A B H C I N Q





KT No.	Replaces Ref. No:	Description	Model / Details
--------	-------------------	-------------	-----------------

**KT04620**

SCANIA 124 DSC 12 (430MM)


**OEM**

1388326 - 1465411

Pos A B H C I N Q

**KT04934**

SCANIA 124 DSC 12 (430MM) 58 SENSOR


**OEM**

1487558

Pos A B H C I N Q

**KT00115**

SCANIA 111-112 DSC 9-11 (420MM)


**OEM**

324640

Pos A B H C I N Q

**KT01084**

SCANIA - 113 DSC 12-13 (420 MM)


**OEM**

393151

Pos A B H C I N Q

**KT01703**

VOLVO - FH 12


**OEM**

8170798 - 20729327 - 21184874

Pos A B H C I N Q

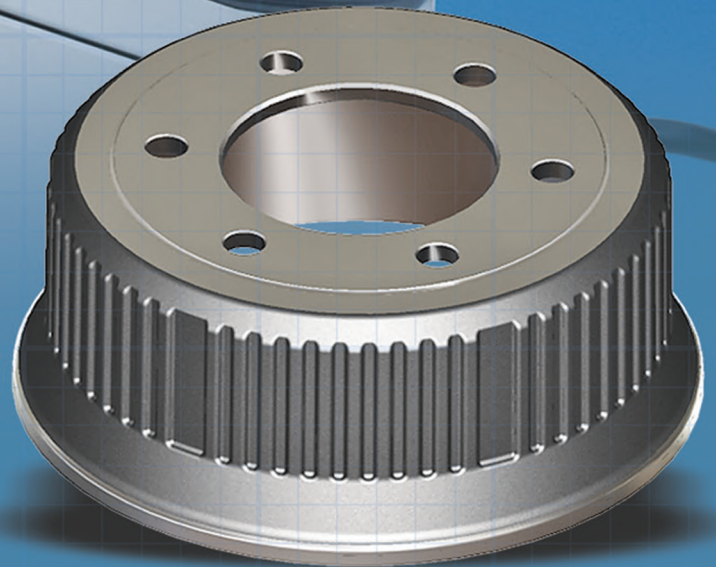


Gesuchte Europäische  
**Qualität**



# KLÖTZE

TECHNIC



# SMALL



KT No. Replaces Ref. No: Description Model / Details

**KT44099**

IVECO 50 NC ORTA MODEL  
(MIDDLE)



OEM

7160033 - 4707533

Pos	A	B	H	C	I	N	Q
F-R	325	88	114	255	280	6 4	12.5 M12

**KT44100**

IVECO 50 S.Y.M. M-23 65/9  
(NEW MODEL)



OEM

4707532 - 7160035 - 7165361

Pos	A	B	H	C	I	N	Q
F-R	325	109	135	255	280	6 4	12.5 M12

**KT44101**

IVECO 85-12 / 120-14



OEM

7160113 - 7165564 - 4715519

Pos	A	B	H	C	I	N	Q
R	325	128	158	255	280	6 4	12.5 M12

**KT44102**

IVECO EUROCITY



OEM

7173970

Pos	A	B	H	C	I	N	Q
R	325	132	164	215	275	8 2	20 M10

**KT44103**

MAGIRUS Y.M.  
(NEW MODEL)



OEM

12B1705021AA

Pos	A	B	H	C	I	N	Q
F-R	325	112	145.5	163	205	6 2	19 M10

**KT44103**

MAGIRUS Y.M. SOĞUTMALI  
(NEW MODEL - COOLED)



OEM

12B1705021AA

Pos	A	B	H	C	I	N	Q
F-R	325	110	145.5	163	205	6 2	19 M10

**KT44104**

SULTAN ORTA MODEL  
(MIDDLE)



OEM

13C0005021AD

Pos	A	B	H	C	I	N	Q
F-R	324.5	130	200	170	205	6 3 3	18.5 M10 13.5

**KT44105**

SULTAN Y.M.  
(NEW MODEL)



OEM

13C00050109AB

Pos	A	B	H	C	I	N	Q
F-R	324.5	126	192	170	205	6 3 3	18.5 M10 13.5

KT No. Replaces Ref. No: Description Model / Details

**KT44106**

ISUZU NPR



OEM

428107376107 - 894.121.428.1-01 - 894121428107

Pos	A	B	H	C	I	N	Q
F-R	319	90	145	156	203	5 5	19,5 M6

**KT44107**

ISUZU NKR



OEM

542.315.037.2 - 51

Pos	A	B	H	C	I	N	Q
F-R	299	66	97	132	170	6 1	15 6

**KT44108**

 ISUZU ŞAMPİYON  
 (CHAMPION)

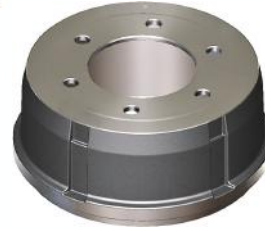

OEM

897.081.218.1 - 01

Pos	A	B	H	C	I	N	Q
F-R	319	116	157	156	222	6 3	23,5 M6

**KT44109**

ISUZU NQR TURKUAZ



OEM

897.102.001.1 - 51 - 897.188.016.0 - 51

Pos	A	B	H	C	I	N	Q
F-R	319	135	166	156	222	6	23.5

**KT44110**

 ISUZU TURKUAZ Y.M.  
 (NEW MODEL)


OEM

277.772.158.0 - 01

Pos	A	B	H	C	I	N	Q
F-R	324.5	138	166	156	222	6	23.5

**KT44111**

 ISUZU NOR TURKUAZ SOĞUTMALI  
 (COOLED)


OEM

897102001 - 2 AV

Pos	A	B	H	C	I	N	Q
F-R	320	133	164.50	156	222	6	23.5

**KT44112**

 ISUZU NKR55  
 (LOW)


OEM

897.169.8062.01

Pos	A	B	H	C	I	N	Q
R	239	276	122	132	184	6	16.5

**KT44113**

 ISUZU NPR - ŞAMPİYON EL FREN KAMPANASI  
 (NPR-CHAMPION HAND BRAKE DRUM)


OEM

8941010571 - 8970339891

Pos	A	B	H	C	I	N	Q
	191	58	69	80	101	4	10.5
	191	58	69	80	101	4	12.5



KT No.

Replaces Ref. No:

Description

Model / Details

### ISUZU

**KT44114**

ISUZU EURO 4



OEM

387004990001

Pos	A	B	H	C	I	N	Q
R	324.5	162	188	156	222	6	23.5

**KT44115**

ISUZU NKR 55 E.M.  
(OLD MODEL)



OEM

897085071

Pos	A	B	H	C	I	N	Q
F	299	85	102.5	132	170	2 6 1	M6 15 6.5

**KT44116**

ISUZU NKR 55 (LOW) Y.M.  
(NEW MODEL)



OEM

897358857001

Pos	A	B	H	C	I	N	Q
F	299	87	139	132	170	6	16.5

**KT44117**

ISUZU NKR 55 E.M. ÇİFT TEKER  
(OLD MODEL / TWIN WHEEL)



OEM

542315041201

Pos	A	B	H	C	I	N	Q
R	228	89	129	132	184	6	16.5

**KT44118**

ISUZU - NLR 85 ÖN  
(FRONT)



OEM

897094434201

Pos	A	B	H	C	I	N	Q
F	300.5	91.5	142	156	203	5	21

**KT44119**

ISUZU - NLR 85 ARKA  
(REAR)



OEM

897184245201

Pos	A	B	H	C	I	N	Q
R	287	92	155	156	205	5	22

**KT44120**

ISUZU - OTOBÜS E.M. ÖN  
(OLD MODEL / FRONT)



OEM

8970347703

Pos	A	B	H	C	I	N	Q
F	320	90	144	156	203	5	22

**KT44121**

ISUZU - OTOBÜS E.M. ARKA  
(OLD MODEL / -REAR)



OEM

8943856503

Pos	A	B	H	C	I	N	Q
R	320	95	163	156	203	5	22



KT No. Replaces Ref. No: Description Model / Details

**KT44122**

 ISUZU - 5 TON ÖN  
 (FRONT)


OEM

Pos	A	B	H	C	I	N	Q
F	300.5	91.5	142	156	203	5	21

**KT44123**

MITSUBISHI 659 PRESTIGE



OEM

MK 321338

Pos	A	B	H	C	I	N	Q
F-R	320	122	155	175	222	6 6	20 M8

**KT44124**

MITSUBISHI 635



OEM

MC 838284

Pos	A	B	H	C	I	N	Q
F-R	320	86	131	165	208	5	19

**KT44125**

MITSUBISHI 449



OEM

MC 112024

Pos	A	B	H	C	I	N	Q
F-R	320	105	155	175	222	6	20

**KT44126**

MITSUBISHI 444



OEM

MB 060504

Pos	A	B	H	C	I	N	Q
F-R	320	86	131	165	208	5	19

**KT44127**

 MITSUBISHI 304-515 ÖN  
 (FRONT)


OEM

MB 060500

Pos	A	B	H	C	I	N	Q
F	300	75	91	140	180	6 2	16.5 M10

**KT44128**

 MITSUBISHI 304-515 ARKA  
 (REAR)


OEM

MT 327119

Pos	A	B	H	C	I	N	Q
R	300	72	130	140	180	6 2	16.5 M10

**KT44129**

BMC 3000



OEM

5M66346


Pos	A	B	H	C	I	N	Q
R	280	74	144	135	180	6 3	18.5 M10





KT No. Replaces Ref. No: Description Model / Details

**KT44130** HYUNDAI



OEM

Pos	A	B	H	C	I	N	Q
F-R	320	116	142	179	222	6	19

**KT44131** NDR - ÖN (FRONT)



OEM

Pos	A	B	H	C	I	N	Q
F	300	88.5	157	156	203	5	20


**KT44132** NDR - ARKA (REAR)



OEM

Pos	A	B	H	C	I	N	Q
R	300	192	157	156	203	5	22

**KT44133** MAZDA



OEM

Pos	A	B	H	C	I	N	Q
F-R	320	86.5	150	145	203	5 2	22.5 M8 16.5

KT No. Replaces Ref. No: Description Model / Details

**KT44134**

HASHIMBUS



OEM

Pos	A	B	H	C	I	N	Q
F-R	319	95.5	179	172	222	6 2	22.5 M8 9/25

**KT44135**

DAIHATSU



OEM

Pos	A	B	H	C	I	N	Q
F-R	320	89	130	144	203	5	17

**KT44080**

TOYOTA



OEM

42431 - 37080

Pos	A	B	H	C	I	N	Q
R	320	99	127.5	160	203	5	15

**NP-0841**

TOYOTA



OEM

43512 - 36191

Pos	A	B	H	C	I	N	Q
F	320	99.5	115	126	167	5	M14 1.5

**NOT:**





TRUCK SPARE PARTS



**KLÖTZE**  
TECHNIC

[www.klotzetechnik.de](http://www.klotzetechnik.de)

Gesuchte Europäische  
**Qualität**

**Klötze Technic** ist ein in Deutschland ansässiger Hersteller und Lieferant von LKW-, Anhänger- und Bus-Ersatzteilen.



**#KLOTZETECHNIC**